

## CLDN18.2 MAB (ZOLBETUXIMAB) MAB

货号: 28078

产品全名: CLDN18.2 (Zolbetuximab)

基因符号 GC-182;MAB-362;MAB362;laudixi小鼠单克

描述: CLDN18.2 (zolbetuximab biosimilar)

背景: Research grade biosimilar. Not for use in therapeutic or diagnostic procedures for humans or animals.

经过测试的应用: Flow Cyt

推荐稀释比: Flow Cyt 1:100

种属反应性: Chimeric

亚型: IgG1

纯化: Purified from cell culture supernatant by affinity chromatography

种属反应性: 人 CLDN18.2

成分: Lyophilized from sterile PBS, pH 7.4. 5 % – 8% trehalose is added as protectants before lyophilization.

储存和运输: Store at  $-20^{\circ}\text{C}$  to  $-80^{\circ}\text{C}$  for 12 months in lyophilized form. After reconstitution, if not intended for use within a month, aliquot and store at  $-80^{\circ}\text{C}$  (Avoid repeated freezing and thawing).

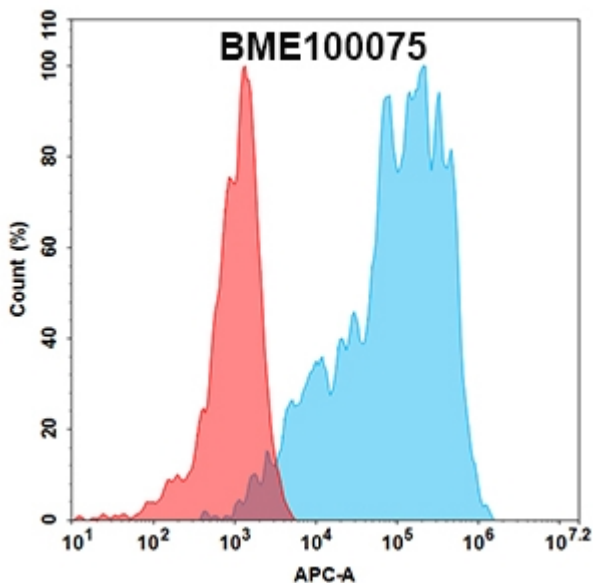


Figure 1. Flow cytometry analysis with Anti-CLDN18.2 mAb 1  $\mu\text{g}/\text{ml}$  (zolbetuximab, 28078) on Expi293 cells transfected with human CLDN18.2 (Blue histogram) or Expi293 transfected with CLDN18.1 (Red histogram).



# Product Description

Pioneering GTPase and Oncogene Product Development since 2010

---