

## ROR1 MAB (ZILOVERTAMAB)

货号: 28076

产品全名: ROR1 (Zilovertamab) 单抗

基因符号 ROR1;TRKR1

描述: ROR1 (zilovertamab) 单抗

背景: Research grade biosimilar. Not for use in therapeutic or diagnostic procedures for humans or animals.

经过测试的应用: ELISA; Flow Cyt

推荐稀释比: ELISA 1:5000-10000; Flow Cyt 1:100

种属反应性: Humanized

亚型: IgG1

纯化: Purified from cell culture supernatant by affinity chromatography

种属反应性: 人 ROR1

成分: Lyophilized from sterile PBS, pH 7.4. 5% - 8% trehalose is added as protectants before lyophilization.

储存和运输: Store at  $-20^{\circ}\text{C}$  to  $-80^{\circ}\text{C}$  for 12 months in lyophilized form. After reconstitution, if not intended for use within a month, aliquot and store at  $-80^{\circ}\text{C}$  (Avoid repeated freezing and thawing).

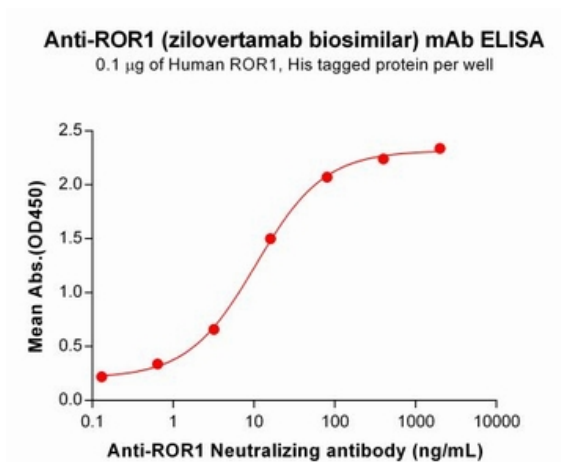


Figure 1. ELISA plate pre-coated by  $2\ \mu\text{g}/\text{ml}$  ( $100\ \mu\text{l}/\text{well}$ ) Human ROR1, His tagged protein 11267 can bind Anti-ROR1 Neutralizing antibody (28076) in a linear range of  $0.64\text{-}16\ \mu\text{g}/\text{ml}$ .

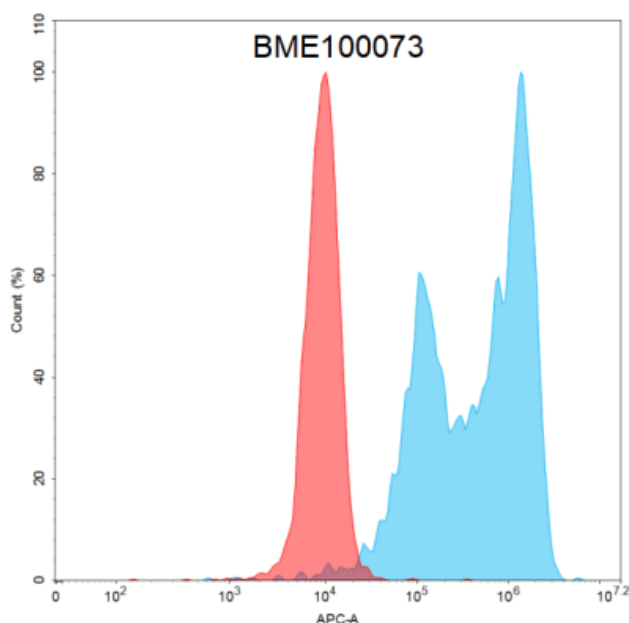


Figure 2. Flow cytometry analysis with Anti-ROR1 (zilovertamab biosimilar) mAb  $15\ \mu\text{g}/\text{mL}$  on Expi293 cells transfected with Human ROR1 (Blue histogram) or Expi293 transfected with irrelevant protein (Red histogram).