

KLRG1 MAB (ULVIPRUBART MAB)

目录: 28153

产品名称: KLRG1(Ulviprubart) Monoclonal Antibody

基因符号: 2F1;CLEC15A;MAFA;MAFA-2F1;MAFA-L;MAFA-LIKE

描述: KLRG1(ulviprubart) Monoclonal Antibody

背景: Research grade biosimilar. Not for use in therapeutic or diagnostic procedures for humans or animals.

经过测试的应用: Flow Cyt

推荐稀释度: Flow Cyt 1:100

种属反应性: Humanized

亚型: IgG1(E239D, M241L)

纯化: Purified from cell culture supernatant by affinity chromatography

种属反应性: Human KLRG1

成分: Lyophilized from sterile PBS, pH 7.4. 5 % – 8% trehalose is added as protectants before lyophilization.

储存和运输: Store at -20°C to -80°C for 12 months in lyophilized form.

After reconstitution, if not intended for use within a month, aliquot and store at -80°C (Avoid repeated freezing and thawing).

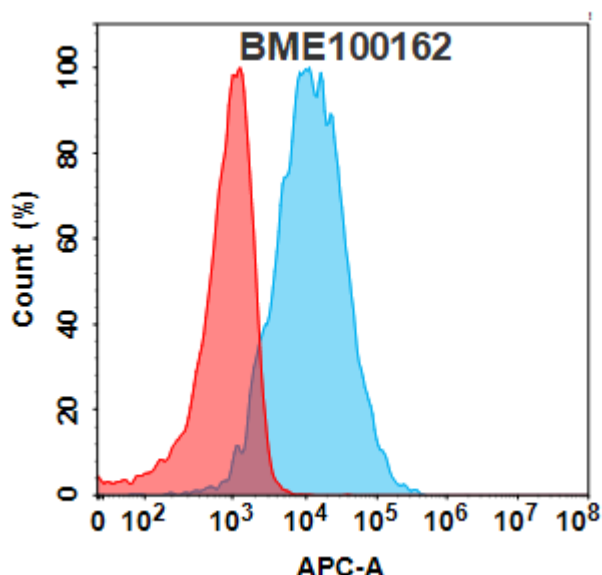


Figure 1. Flow cytometry analysis with 1µg/mL KLRG1(ulviprubart biosimilar) mAb (28153) on Expi293 cells transfected with Human KLRG1 protein (Blue histogram) or Expi293 transfected with irrelevant protein (Red histogram).

