

## B-TUBULIN PAB

产品名称:  $\beta$ -Tubulin 兔多抗

货号: 21089

基因符号: TUBB

描述:  $\beta$ -Tubulin 兔多抗

背景: There are five members of the tubulin family ( $\alpha$ ,  $\beta$ ,  $\gamma$ ,  $\delta$ , and  $\epsilon$ ). The most common members are  $\alpha$  and  $\beta$  tubulins which form heterodimers as the basic structural unit of microtubules.

免疫原: A synthetic peptide from the internal region of human  $\beta$ -tubulin 蛋白

经过测试的应用: ELISA, WB, IHC, IP

推荐稀释比:

ELISA: 1:100–1:5000

WB: 1:100–1:1000

IHC: 1:50–1:100

**Concentration:** 0.2 mg/ml

种属反应性: Rabbit

形式: Liquid

克隆性: Polyclonal

亚型: IgG

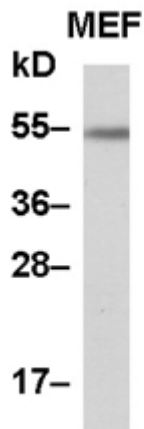
纯化: Purified from serum

成分: PBS (without  $Mg^{2+}$  and  $Ca^{2+}$ ), pH 7.4, 150 mM NaCl, 50% glycerol

种属反应性:  $\beta$ -Tubulin antibody recognizes  $\beta$ -tubulin proteins from vertebrates.

储存条件: Store at  $-20^{\circ}C$ . Avoid repeated freezing and thawing

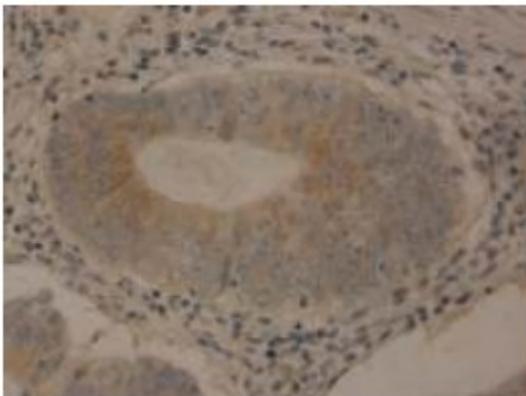
## 蛋白质印迹:



### WB: anti-TUBB pAb

MEF whole-cell lysate was used for Western blot with anti- $\beta$ -tubulin 兔多抗 (Cat # 21089).

### Immunohistochemistry:



Immunohistochemical staining of formalin-fixed paraffin-embedded colon carcinoma using the affinity purified Anti- $\beta$ -tubulin 兔多抗 (Cat# 21089) with a 1:50 dilution.