

TSLP (DMC426) IGG1 CHIMERIC MAB

货号: 28220

产品全名: TSLP(DMC426) IgG1 Chimeric 单抗

基因符号 TSLP

描述: TSLP antibody(DMC426) IgG1 Chimeric 单抗

背景: This gene encodes a hemopoietic cytokine proposed to signal through a heterodimeric receptor complex composed of the thymic stromal lymphopoietin receptor and the IL-7R alpha chain. It mainly impacts myeloid cells and induces the release of T cell-attracting chemokines from monocytes and enhances the maturation of CD11c() dendritic cells. The protein promotes T helper type 2 (TH2) cell responses that are associated with immunity in various inflammatory diseases; including asthma; allergic inflammation and chronic obstructive pulmonary disease. The protein is therefore considered a potential therapeutic target for the treatment of such diseases. In addition; the shorter (predominant) isoform is an antimicrobial protein; displaying antibacterial and antifungal activity against *B. cereus*; *E. coli*; *E. faecalis*; *S. mitis*; *S. epidermidis*; and *C. albicans*. Alternative splicing of this gene results in multiple transcript variants.

经过测试的应用: Flow Cyt

推荐稀释比: Flow Cyt 1:100

种属反应性: Rabbit

亚型: Rabbit:Human Fc chimeric IgG1

纯化: Purified from cell culture supernatant by affinity chromatography

种属反应性: 人 TSLP

成分: Lyophilized from sterile PBS, pH 7.4. 5 % – 8% trehalose is added as protectants before lyophilization.

储存和运输: Store at -20°C to -80°C for 12 months in lyophilized form. After reconstitution, if not intended for use within a month, aliquot and store at -80°C (Avoid repeated freezing and thawing).

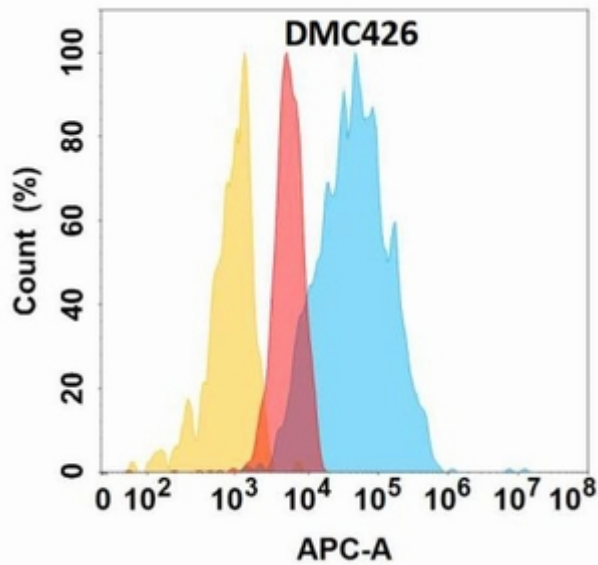


Figure 1. TSLP protein is highly expressed on the surface of Expi293 cell membrane. Flow cytometry analysis with Anti-TSLP (DMC426) on Expi293 cells transfected with human TSLP (Blue histogram) or Expi293 transfected with irrelevant protein (Red histogram), and Isotype antibody on Expi293 transfected with irrelevant protein (Orange histogram).