

TP53 PAB

TP53 Polyclonal Antibody

货号: 21270

基因符号: TP53

描述: TP53 Rabbit Polyclonal Antibody

背景: TP53 belongs to the p53 proteins family. It is ubiquitously expressed, acts as a tumor suppressor in many tumor types and induces growth arrest or apoptosis depending on the physiological circumstances and cell type. Defects in TP53 are a cause of esophageal cancer (ESCR), lung cancer (LNCR), adrenocortical carcinoma (ADCC), choroid plexus papilloma (CPLPA) and so on.

免疫原: A synthetic peptide from the internal region of TP53 protein, human origin.

经过测试的应用: ELISA, WB, IHC

推荐稀释度:

ELISA 1:500-1:5000

WB 1:500-1:2000

IHC 1:50-200

浓度: 0.2 mg/ml

种属反应性: Rabbit

形式: Liquid

克隆性: Polyclonal

亚型:

纯化: Purified from serum

Preservative: No

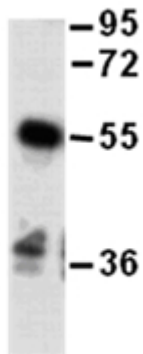
成分: PBS (without Mg^{2+} and Ca^{2+}), pH 7.4, 150 mM NaCl, 50% glycerol

种属反应性: TP53 rabbit polyclonal antibody recognizes TP53 from vertebrates.

储存条件: Store at $-20^{\circ}C$. Avoid repeated freezing and thawing

Western blot:

TP53 protein



WB: Anti-TP53 pAb

Western blot analysis of recombinant TP53 protein. Purified full length His-tagged TP53 protein was blotted with anti TP53 rabbit TP53 rabbit polyclonal antibody (货号21270).