

## TSLP MAB (TEZEPELUMAB)

货号: 28110

产品全名: TSLP(Tezepelumab) 单抗

基因符号 Thymic stromal lymphopoietin

描述: TSLP(tezepelumab) 单抗

背景: Research grade biosimilar. Not for use in therapeutic or diagnostic procedures for humans or animals.

经过测试的应用: ELISA; Flow Cyt

推荐稀释比: ELISA 1:5000-10000; Flow Cyt 1:100

种属反应性: Homo sapiens

亚型: IgG2

纯化: Purified from cell culture supernatant by affinity chromatography

种属反应性: 人 TSLP

成分: Lyophilized from sterile PBS, pH 7.4. 5% – 8% trehalose is added as protectants before lyophilization.

储存和运输: Store at  $-20^{\circ}\text{C}$  to  $-80^{\circ}\text{C}$  for 12 months in lyophilized form. After reconstitution, if not intended for use within a month, aliquot and store at  $-80^{\circ}\text{C}$  (Avoid repeated freezing and thawing).

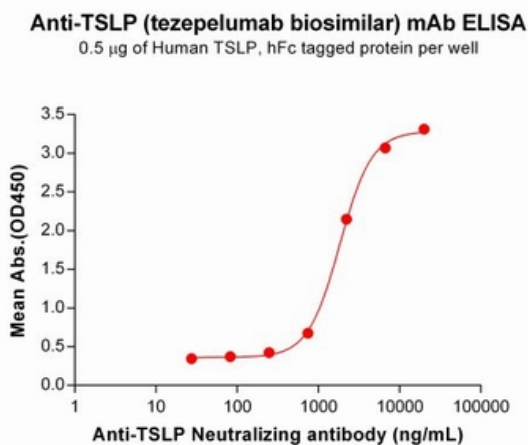


Figure 1. ELISA plate pre-coated by  $5\ \mu\text{g}/\text{mL}$  ( $100\ \mu\text{l}/\text{well}$ ) Human TSLP Protein, hFc Tag (11433) can bind Anti-TSLP Neutralizing antibody (28110) in a linear range of 741-6667 ng/mL. In order to specifically detect 28110, mouse anti-human Fab-specific antibody was used as detection antibody.

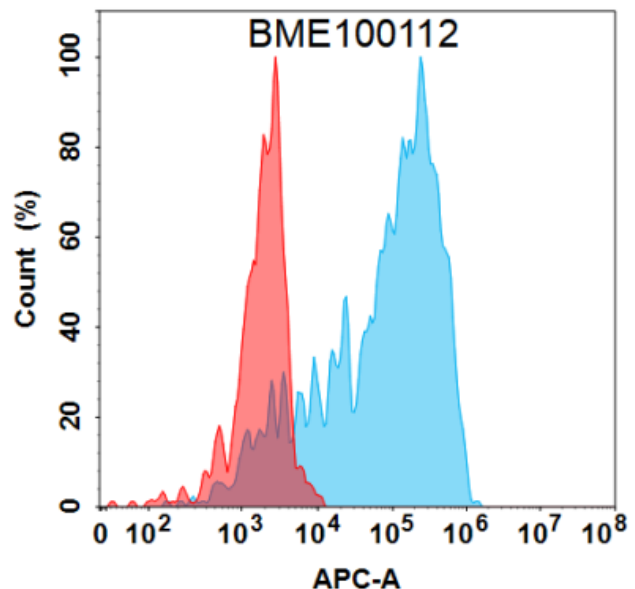


Figure 2. Flow cytometry analysis under cell membrane permeable condition with  $1\ \mu\text{g}/\text{mL}$  Anti-TSLP (tezepelumab biosimilar) mAb (28110) on Expi293 cells transfected with Human TSLP protein (Blue histogram) or Expi293 transfected with irrelevant protein (Red histogram).



# Product Description

Pioneering GTPase and Oncogene Product Development since 2010

---