

## SUMO-2/3 PAB

产品名称: SUMO-2/3 兔多抗

货号: 21237

基因符号: SUMO2/3

描述: SUMO-2/3 兔多抗

背景: Small Ubiquitin-like Modifier or SUMO proteins are a family of small proteins that are covalently attached to and detached from other proteins in cells to modify their function. SUMOylation is a post-translational modification involved in various cellular processes, such as nuclear-cytosolic transport, transcriptional regulation, apoptosis, protein stability, response to stress, and progression through the cell cycle. There are 3 confirmed SUMO isoforms in humans: SUMO-1, SUMO-2 and SUMO-3. SUMO-2 and -3 show a high degree of similarity to each other and are distinct from SUMO-1.

免疫原: A synthetic peptide corresponding to residues near the C-terminal of human SUMO-2/3.

经过测试的应用: ELISA, WB, IHC, IP

推荐稀释比:

ELISA: 1:1000-1:5000

WB: 1:100-1:1000

IHC: 1:50-1:100

**Concentration:** 1 mg/ml

种属反应性: Rabbit

形式: Liquid

克隆性: Polyclonal

亚型: IgG

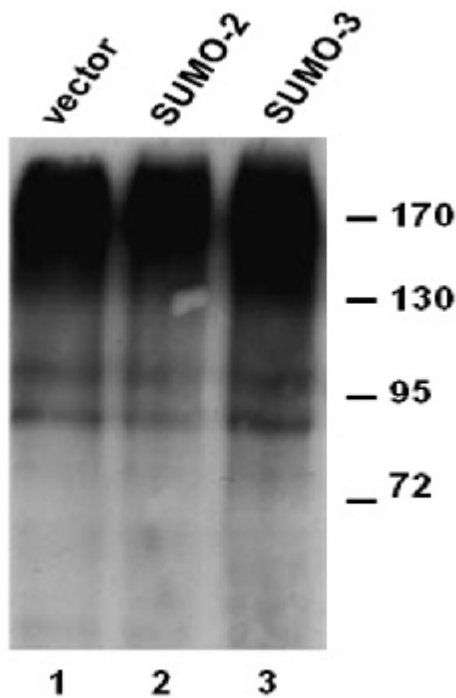
纯化: Purified from serum

成分: PBS (without  $Mg^{2+}$  and  $Ca^{2+}$ ), pH 7.4, 150 mM NaCl, 50% glycerol

种属反应性: Detects SUMO-2/3 but not SUMO-1 from vertebrates.

储存条件: Store at  $-20^{\circ}C$ . Avoid repeated freezing and thawing

蛋白质印迹:



WB:anti-SUMO-2/3 pAb

**Western blot analysis of over-expressed SUMO-2 and SUMO-3 proteins.**

HEK293 cells were transfected with SUMO-2 (lane 2) and SUMO-3 (lane 3) cDNAs and control empty vector (lane 1). Cell lysates were blotted with anti-SUMO-2/3 兔多抗 (货号: 21237).