

## SMO(A68V)

产品名称: SMO(A68V) 小鼠单抗

货号: 26425

规格: 100  $\mu$ L

基因符号: SMO; MRD21

描述: SMO(A68V) 小鼠单抗

背景: Smoothed is a protein that in humans is encoded by the SMO gene. Smoothed is a G protein-coupled receptor that is a component of the hedgehog signaling pathway and is conserved from flies to humans. It is the molecular target of the teratogen cyclopamine. SMO can function as an oncogene. Activating SMO mutations can lead to unregulated activation of the hedgehog pathway and cancer

免疫原: A synthetic peptide from the internal region of SMO which includes the mutation of A68V, human origin.

经过测试的应用: ELISA, WB, IHC

推荐稀释比: ELISA: 1:1000-1:5000WB: 1:500-1:1000IHC: 1:50-1:100

**Concentration:** 1 mg/ml

种属反应性: Mouse

形式: Liquid

克隆性: Monoclonal

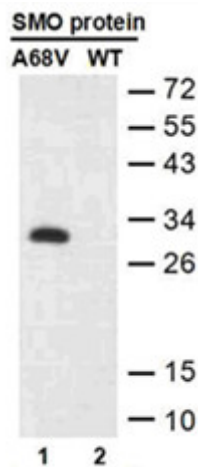
亚型: IgG

纯化: Purified from ascites

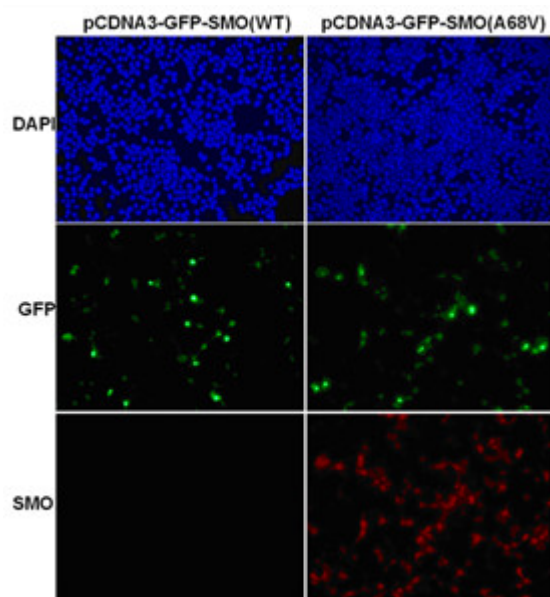
成分: PBS (without Mg<sup>2+</sup> and Ca<sup>2+</sup>), pH 7.4, 150 mM NaCl, 50% glycerol

种属反应性: Recognizes A68V mutant, but not wild type SMO of vertebrates.

储存条件: Store at -20°C. Avoid repeated freezing and thawing



**蛋白质印迹:** WB: anti-SMO (A68V) mAb Western blot analysis of recombinant SMO(A68V) and wild type proteins. Purified His-tagged SMO(A68V) protein (lane 1) and corresponding wild type protein (lane 2) were blotted with Anti-SMO(A68V) monoclonal antibody (货号:26425).



**Immunofluorescence:** Immunofluorescence of cells expressing SMO proteins with Anti-SMO(A68V) antibody. HEK293T cells were transfected with pCDNA3-GFP-SMO (WT) plasmid (left column) or pCDNA3-GFP-SMO(A68V) plasmid (right column), then fixed and stained with Anti-SMO(A68V) monoclonal antibody (货号:26425).