

SLC7A5 PAB

产品名称: SLC7A5 兔多抗

货号: 21118

基因符号: SLC7A5

描述: SLC7A5 兔多抗

背景: Solute carrier family 7 member 5 (also known as large neutral amino acids transporter small subunit 1) is a protein encoded by the SLC7A5 gene in human. SLC7A5 plays a role in neuronal cell proliferation, is involved in the uptake of methylmercury (MeHg) and plays a role in metal ion homeostasis and toxicity.

免疫原: A synthetic peptide from the internal region of SLC7A5 of human origin.

经过测试的应用: ELISA, WB, IHC, IP

推荐稀释比:

ELISA: 1:100-1:5000

WB: 1:100-1:2000

IHC: 1:50-1:100

Concentration: 0.25 mg/ml

种属反应性: Rabbit

形式: Liquid

克隆性: Polyclonal

亚型: IgG

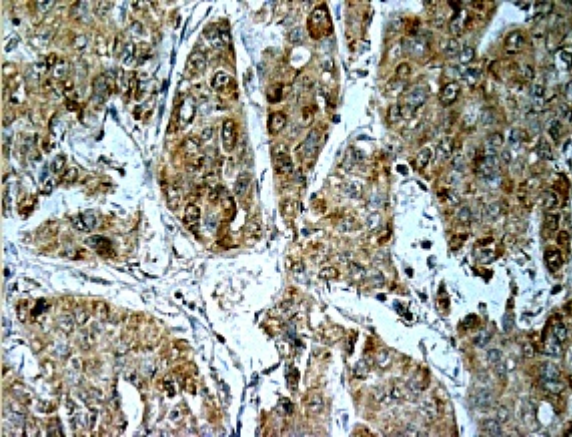
纯化: Purified from serum

成分: PBS (without Mg^{2+} and Ca^{2+}), pH 7.4, 150 mM NaCl, 50% glycerol

种属反应性: SLC7A5 antibody recognizes SLC7A5 of vertebrates.

储存条件: Store at $-20^{\circ}C$. Avoid repeated freezing and thawing

Immunohistochemistry:



Western blot analysis of Ric-8A proteins.

Whole-cell lysate of HeLa cells was blotted with Anti-Ric-8A monoclonal antibody (货号:26071).