

## SELP (DM150) RABBIT MAB

货号: 28494

产品全名: SELP(DM150) 兔单克隆抗体

基因符号 P-Selectin;CD62P;SELP;GMP-140

描述: SELP antibody(DM150) 兔单克隆抗体

背景: This gene encodes a 140 kDa protein that is stored in the alpha-granules of platelets and Weibel-Palade bodies of endothelial cells. This protein redistributes to the plasma membrane during platelet activation and degranulation and mediates the interaction of activated endothelial cells or platelets with leukocytes. The membrane protein is a calcium-dependent receptor that binds to sialylated forms of Lewis blood group carbohydrate antigens on neutrophils and monocytes. Alternative splice variants may occur but are not well documented.

经过测试的应用: ELISA; Flow Cyt

推荐稀释比: ELISA 1:5000-10000; Flow Cyt 1:100

种属反应性: Rabbit

亚型: Rabbit IgG

纯化: Purified from cell culture supernatant by affinity chromatography

种属反应性: 人 SELP

成分: Lyophilized from sterile PBS, pH 7.4. 5% - 8% trehalose is added as protectants before lyophilization.

储存和运输: Store at -20°C to -80°C for 12 months in lyophilized form. After reconstitution, if not intended for use within a month, aliquot and store at -80°C (Avoid repeated freezing and thawing).

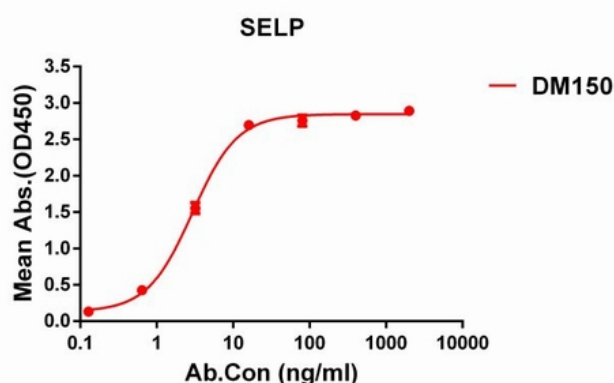


Figure 1. ELISA plate pre-coated by 1 µg/ml (100 µl/well) Human SELP protein, hFc tagged protein 11207 can bind Rabbit anti-SELP monoclonal antibody (clone: DM150) in a linear range of 1-10 ng/ml.

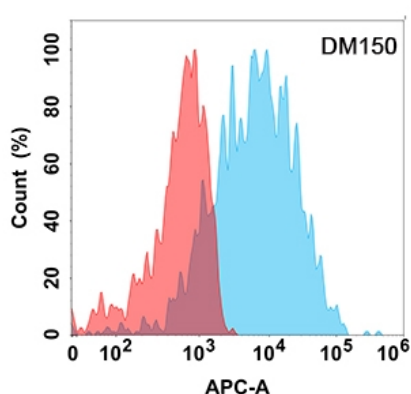


Figure 2. Flow cytometry analysis with Anti-SELP (DM150) on Expi293 cells transfected with human SELP (Blue histogram) or Expi293 transfected with irrelevant protein (Red histogram).