

SARS-COV-2 (DELTA) S PROTEIN RBD , HFC TAG

货号: 11454

产品全名: SARS-CoV-2 (Delta) S Protein RBD

规格: 10/50/100 µg

基因符号 SARS-CoV-2 B.1.617.2 (Delta) Spike RBD 蛋白

目标蛋白: S protein RBD

UNIPROT ID: P0DTC2

描述: "Recombinant SARS-CoV-2 RBD(L452R

背景: SARS-CoV-2 (Severe Acute Respiratory Syndrome Coronavirus 2) also known as Covid19 (2019 Novel Coronavirus) is a virus that causes illnesses ranging from the common cold to severe diseases. The spike protein is a type I transmembrane protein containing two subunits, S1 and S2. S1 mainly contains a receptor binding domain (RBD), which accounts for recognizing the cell surface receptor, ACE2. S2 contains basic elements needed for the membrane fusion. Recent publications indicate that S1-RBD domain can induce virus neutralizing-antibody and T cell response.

物种/宿主: HEK293

分子量: The protein has a predicted molecular mass of 51.2 kDa after removal of the signal peptide. The apparent molecular mass of RBD(L452R and T487K)-hFc is approximately 55-70 kDa due to glycosylation.

分子特征: S protein RBD(L452R and T487K)(Arg319-Phe541) hFc(Glu99-Ala330)

纯化: The purity of the protein is greater than 95% as determined by SDS-PAGE and Coomassie blue staining.

Formulation & Reconstitution: Lyophilized from nanodisc solubilization buffer (20 mM Tris-HCl, 150 mM NaCl, pH 8.0). Normally 5% - 8% trehalose is added as protectants before lyophilization.

储存和运输: Store at -20°C to -80°C for 12 months in lyophilized form. After reconstitution, if not intended for use within a month, aliquot and store at -80°C (Avoid repeated freezing and thawing). Lyophilized proteins are shipped at ambient temperature.

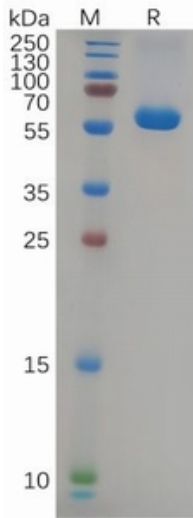


Figure 1. SARS-CoV-2 (2019-nCoV) S protein RBD(L452R & T487K), hFc Tag on SDS-PAGE under reducing condition.

CoV-2 (Delta) S-RBD, hFc Tagged protein ELISA
0.2 µg of CoV-2 (Delta) S-RBD, hFc tagged protein per well

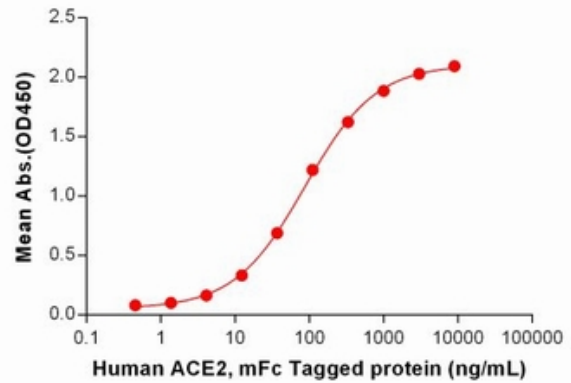


Figure 2. ELISA plate pre-coated by 2 µg/ml (100 µl/well) SARS-CoV-2 (Delta) S protein RBD , hFc Tag (11454) can bind Human ACE2 Protein, mFc Tag 11195 in a linear range of 4.115-3000 ng/mL.

CoV-2 (Delta) S-RBD, hFc Tagged protein ELISA
0.2 µg of CoV-2 (Delta) S-RBD, hFc tagged protein per well

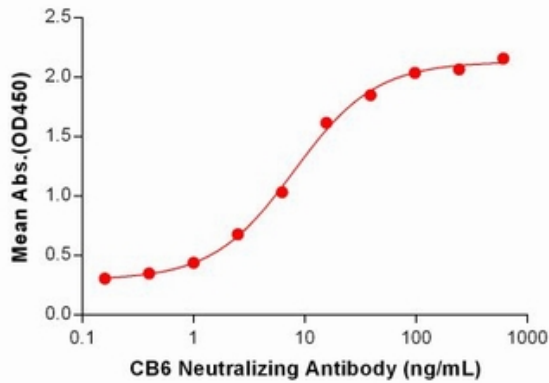


Figure 3. ELISA plate pre-coated by 2 µg/ml (100 µl/well) SARS-CoV-2 (Delta) S protein RBD , hFc Tag (11454) can bind Anti-SARS-CoV-2 (CB6 biosimilar) mAb 28020 in a linear range of 1.00-97.66 ng/mL.

CoV-2 (Delta) S-RBD, hFc Tagged protein ELISA
0.2 µg of CoV-2 (Delta) S-RBD, hFc tagged protein per well

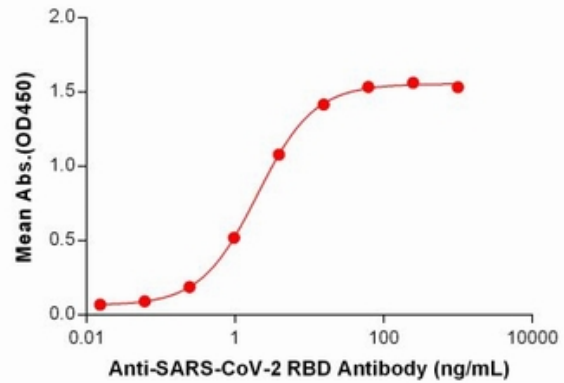


Figure 4. ELISA plate pre-coated by 2 µg/ml (100 µl/well) SARS-CoV-2 (Delta) S protein RBD , hFc Tag (11454) can bind Anti-SARS-CoV-2 RBD antibody (DM55), Rabbit mAb 28354 in a linear range of 0.244-15.625 ng/mL.