

## ROR1 (DM149) RABBIT MAB

货号: 28493

产品全名: ROR1(DM149) 兔单克隆抗体

基因符号 ROR1;NTRK1

描述: ROR1 antibody(DM149) 兔单克隆抗体

背景: This gene encodes a receptor tyrosine kinase-like orphan receptor that modulates neurite growth in the central nervous system. The encoded protein is a glycosylated type I membrane protein that belongs to the ROR subfamily of cell surface receptors. It is a pseudokinase that lacks catalytic activity and may interact with the non-canonical Wnt signalling pathway. This gene is highly expressed during early embryonic development but expressed at very low levels in adult tissues. Increased expression of this gene is associated with B-cell chronic lymphocytic leukaemia. Alternative splicing results in multiple transcript variants encoding different isoforms. [provided by RefSeq; Jun 2012]

经过测试的应用: ELISA; Flow Cyt

推荐稀释比: ELISA 1:5000-10000; Flow Cyt 1:100

种属反应性: Rabbit

亚型: Rabbit IgG

纯化: Purified from cell culture supernatant by affinity chromatography

种属反应性: 人 ROR1

成分: Lyophilized from sterile PBS, pH 7.4. 5% - 8% trehalose is added as protectants before lyophilization.

储存和运输: Store at -20°C to -80°C for 12 months in lyophilized form. After reconstitution, if not intended for use within a month, aliquot and store at -80°C (Avoid repeated freezing and thawing).

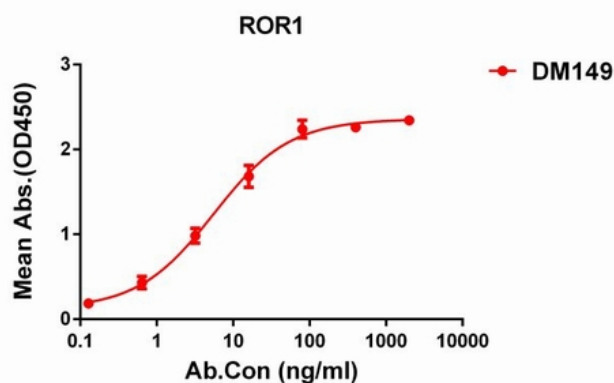


Figure 1. ELISA plate pre-coated by 1 µg/ml (100 µl/well) Human ROR1 protein, His tagged protein 11267 can bind Rabbit anti-ROR1 monoclonal antibody (clone: DM149) in a linear range of 1-50 ng/ml.

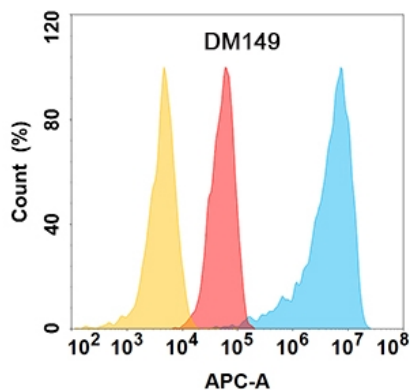


Figure 2. ROR1 protein is highly expressed on the surface of Expi293 cell membrane. Flow cytometry analysis with Anti-ROR1 (DM149) on Expi293 cells transfected with human ROR1 (Blue histogram) or Expi293 transfected with irrelevant protein (Red histogram), and Isotype antibody on Expi293 transfected with irrelevant protein (Orange histogram).