

CDC42+RAC1+RHOA PAB

产品名称: Cdc42/Rac1/RhoA 兔多抗

货号: 21035

基因符号: CDC42+RAC1+RHOA

描述: Cdc42+Rac1+RhoA 兔多抗

背景: Small GTPases are a super-family of cellular signaling regulators. The Rho sub-family GTPases regulate cell motility, cell division, and gene transcription.

免疫原: A synthetic peptide from the N-terminal region common among Cdc42, Rac1, and RhoA.

经过测试的应用: ELISA, WB, IHC

推荐稀释比: ELISA 1:100-1:5000

WB 1:100-1:2000

IHC 1:100-1:1000

Concentration: 0.2 mg/ml

种属反应性: Rabbit

形式: Liquid

克隆性: Polyclonal

亚型: IgG

纯化: Purified from serum

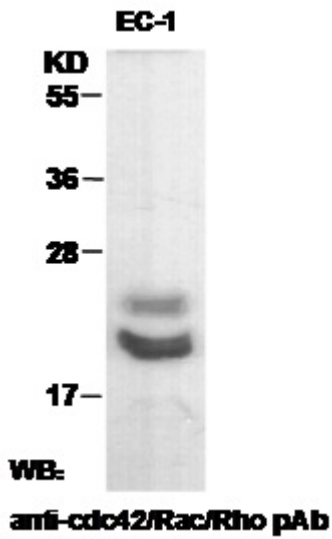
成分: PBS (without Mg^{2+} and Ca^{2+}), pH 7.4, 150 mM NaCl, 50% glycerol

种属反应性: Rho family pan antibody recognizes Cdc42, Rac1, and RhoA from vertebrates.

储存条件: Store at $-20^{\circ}C$. Avoid repeated freezing and thawing

Download Datasheet: 

蛋白质印迹:



EC-1 whole-cell lysate was used for Western blot with the polyclonal Rho family pan antibody (cat # 21035).