

RHOA-GTP

产品名称: RhoA-GTP 小鼠单抗

货号: 26904

规格: 30 μ L

基因符号: RHOA

描述: RhoA-GTP 小鼠单抗

背景: Small GTPases are a super-family of cellular signaling regulators. RhoA belongs to the Rho sub-family of GTPases. Rho proteins play critical roles in many actin cytoskeleton- dependent processes including platelet aggregation, cell motility, contraction, and cytokinesis. It regulates the formation of stress fibers and focal adhesions in fibroblasts and Ca^{2+} sensitivity of smooth muscle contraction.

免疫原: Recombinant full length protein of active RhoA

经过测试的应用: IP, IHC and IF (**Not applicable for WB since WB denatures the GTPase**)

推荐稀释比: IP: 1 μ g for 1~2 mg total cellular proteins IHC, IF: 1:50~1:250

Concentration: 1 mg/ml

种属反应性: Mouse

形式: Liquid

克隆性: Monoclonal

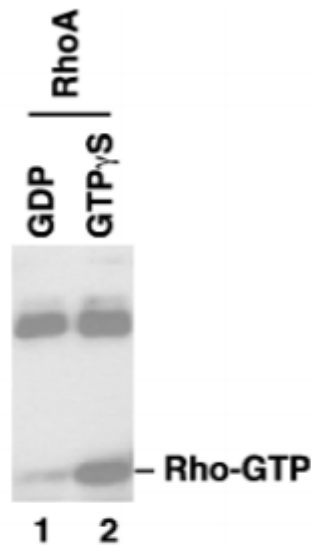
亚型: IgG2b

纯化: Purified from ascites

成分: PBS (without Mg^{2+} and Ca^{2+}), pH 7.4, 150 mM NaCl, 50% glycerol

种属反应性: RhoA monoclonal antibody recognizes active RhoA from vertebrates.

储存条件: Store at $-20^{\circ}C$. Avoid repeated freezing and thawing



IP: anti-active RhoA mAb

WB: anti-RhoA mAb

免疫沉淀/蛋白质印迹:

IP/WB

Analysis of Active RhoA Protein. Purified recombinant RhoA proteins were loaded with GDP (lane 1) or GTP γ S (lane 2). These proteins were immunoprecipitated with anti-RhoA-GTP monoclonal antibody (货号: 26904). After SDS/PAGE, the membrane filter was probed with anti-RhoA 小鼠单抗 (货号: 26007).