

RHEB(Y35N)

产品名称: RheB(Y35N) 小鼠单抗

货号: 26338

规格: 100 μ L

基因符号: RHEB

描述: RheB(Y35N) 小鼠单抗

背景: RheB (Ras Homolog Enriched in Brain) is an evolutionarily conserved member of the Ras-family of small GTP-binding proteins originally found to be rapidly induced by synaptic activity in the hippocampus following seizure. While it is expressed at relatively high levels in the brain, RheB is widely expressed in other tissues and may be induced by growth factor stimulation. RheB has an important role in regulating the insulin/TOR signaling pathway. The mammalian target of rapamycin, mTOR, is a serine/threonine protein kinase that acts as a sensor for ATP and amino acids, balancing the availability of nutrients with translation and cell growth. The tuberin/hamartin (TSC2/TSC1) complex inhibits mTOR activity indirectly by inhibiting RheB via tuberin's GAP activity.

免疫原: A synthetic peptide from the internal region of RHEB which includes the mutation of Y35N, human origin.

经过测试的应用: ELISA, WB, IHC

推荐稀释比: ELISA: 1:1000-1:2000WB: 1:500-1:1000IHC: 1:50-1:100

Concentration: 1 mg/ml

种属反应性: Mouse

形式: Liquid

克隆性: Monoclonal

亚型: IgG

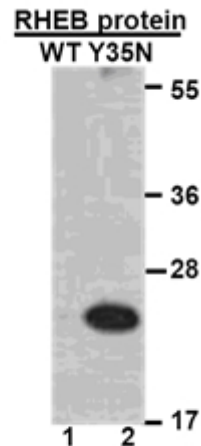
纯化: Purified from ascites

Preservative: No

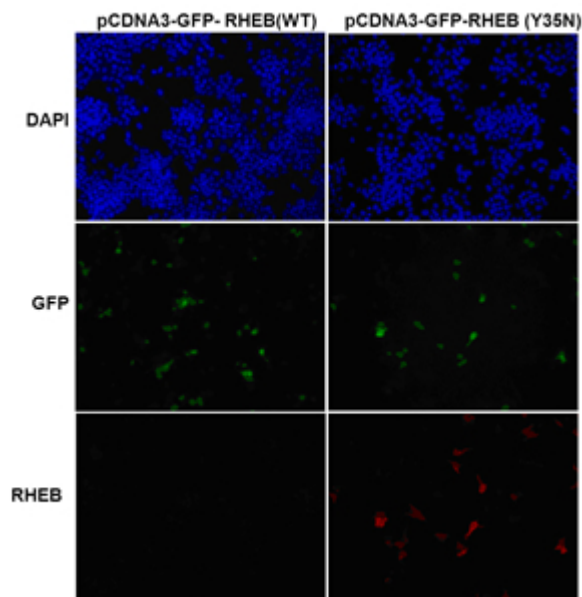
成分: PBS (without Mg^{2+} and Ca^{2+}), pH 7.4, 150 mM NaCl, 50% glycerol

种属反应性: Recognizes Y35N mutant, but not wild type RHEB of vertebrates.

储存条件: Store at $-20^{\circ}C$. Avoid repeated freezing and thawing



蛋白质印迹: WB: anti-RHEB (Y35N) mAb Western blot analysis of recombinant RHEB(Y35N) and wild type proteins. Purified His-tagged RHEB(Y35N) protein (lane2) and corresponding wild type protein (lane1) were blotted with Anti-RheB(Y35N) monoclonal antibody (货号:26338).



Immunofluorescence: Immunofluorescence of cells expressing RHEB proteins with Anti-RHEB(Y35N) antibody. HEK293T cells were transfected with pCDNA3-GFP-RHEB (WT) plasmid (left column) or pCDNA3-GFP-RHEB(Y35N) plasmid (right column), then fixed and stained with Anti-RheB(Y35N) monoclonal antibody (货号:26338).