

## RHEB MAB

产品名称: RheB 小鼠单抗

货号: 26015

基因符号: RHEB

描述: RheB 小鼠单抗

背景: RheB (Ras Homolog Enriched in Brain) is an evolutionarily conserved member of the Ras-family of small GTP-binding proteins originally found to be rapidly induced by synaptic activity in the hippocampus following seizure. While it is expressed at relatively high levels in the brain, RheB is widely expressed in other tissues and may be induced by growth factor stimulation. RheB has an important role in regulating the insulin/TOR signaling pathway. The mammalian target of rapamycin, mTOR, is a serine/threonine protein kinase that acts as a sensor for ATP and amino acids, balancing the availability of nutrients with translation and cell growth. The tuberin/hamartin (TSC2/TSC1) complex inhibits mTOR activity indirectly by inhibiting RheB via tuberin's GAP activity.

免疫原: Recombinant full length protein of RheB.

经过测试的应用: ELISA, WB, IHC

推荐稀释比:

ELISA: 1:100-1:5000

WB: 1:100-1:2000

IHC: 1:50-1:100

**Concentration:** 1 mg/ml

种属反应性: Mouse

形式: Liquid

克隆性: Monoclonal

亚型: IgG

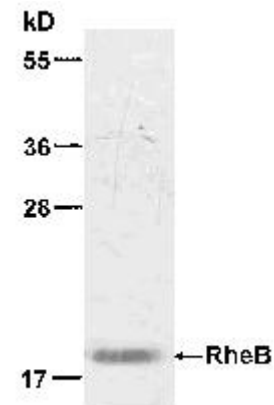
纯化: Purified from ascites

成分: PBS (without Mg<sup>2+</sup> and Ca<sup>2+</sup>), pH 7.4, 150 mM NaCl, 50% glycerol

种属反应性: RheB antibody recognizes RheB proteins of vertebrates.

储存条件: Store at -20°C. Avoid repeated freezing and thawing

蛋白质印迹:



WB: anti-RheB MAb

**Western blot analysis of RheB proteins.** HEK-293 whole-cell lysate was used for Western blot.