

## RHEB-GTP

产品名称: Rheb-GTP 小鼠单抗

货号: 26910

规格: 30  $\mu$ L

基因符号: RHEB

描述: Rheb-GTP 单抗

背景: Small GTPases are a super-family of cellular signaling regulators. Rheb is a member of the Ras-superfamily GTPases. Rheb has been shown to interact with C-Raf, Mammalian target of rapamycin (mTOR), TSC2, Ataxia telangiectasia mutated (ATM), KIAA1303 and Ataxia telangiectasia and Rad3 related (ATR).

免疫原: Recombinant full-length protein of active Rheb.

经过测试的应用: IP, IHC, IF

推荐稀释比: IP: 1  $\mu$ g for 1~2 mg total cellular proteins IHC, IF: 1:50-1:250

**Concentration:** 1 mg/ml

种属反应性: Mouse

形式: Liquid

克隆性: Monoclonal

亚型: IgM

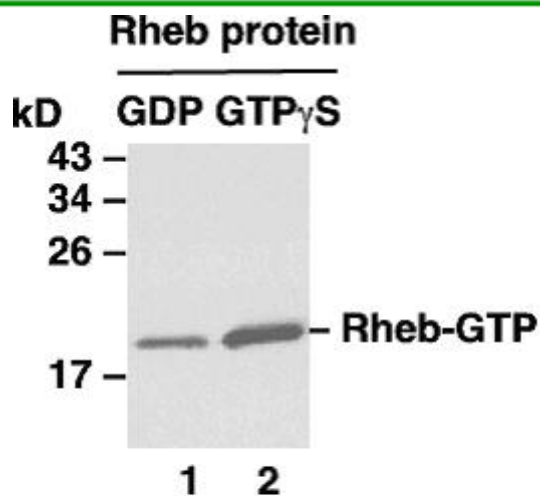
纯化: Purified from ascites

**Preservative:** No

**Constituents:** PBS (without  $Mg^{2+}$  and  $Ca^{2+}$ ), pH 7.4, 150 mM NaCl, 50% glycerol

种属反应性: Rheb-GTP monoclonal antibody recognizes active Rheb of vertebrates.

储存条件: Store at  $-20^{\circ}C$ . Avoid freeze/thaw cycles



**IP: anti-active Rheb mAb**

**免疫沉淀/蛋白质印迹:** **WB: anti-Rheb pAb** Rheb activation assay. Purified Rheb proteins were immunoprecipitated after treated with GDP (lane 1) or GTP<sub>γ</sub>S (lane 2). Immunoprecipitation was done with the anti-Rheb-GTP monoclonal antibody (货号: 26910). Immunoblot was with an anti-Rheb 兔多抗 (货号: 21098).