

RET(C634Y)

产品名称: RET(C634Y) 小鼠单抗

货号: 26146

基因符号: RET, PTC, CDHF12, CAHF16, HSCRI, MEN2A, MEN2B

描述: RET(C634Y) 小鼠单抗

背景: RET protein is encoded by the RET proto- oncogene. It is a receptor tyrosine kinase. RET loss of function mutations are associated with the development of Hirschsprung's disease, while gain of function mutations are associated with development of various types of human cancer, including medullary thyroid carcinoma, multiple endocrine neoplasia type 2A and 2B, pheochromocytoma and parathyroid hyperplasia.

免疫原: A synthetic peptide from the internal region of RET which includes the mutation of C634Y, human origin.

经过测试的应用: ELISA, WB, IHC

推荐稀释比: ELISA: 1:1000-1:2000WB: 1:500-1:1000IHC: 1:50-1:100

Concentration: 0.5 mg/ml

种属反应性: Mouse

形式: Liquid

克隆性: Monoclonal

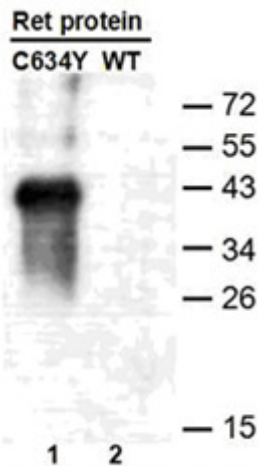
亚型: IgG

纯化: Purified from ascites

成分: PBS (without Mg²⁺ and Ca²⁺), pH 7.4, 150 mM NaCl, 50% glycerol

种属反应性: Recognizes C634Y mutant, but not wild type RET of vertebrates.

储存条件: Store at -20°C. Avoid repeated freezing and thawing



蛋白质印迹: WB: anti-Ret (C634Y) mAb Western blot analysis of recombinant RET(C634Y) and wild type proteins. Purified His-tagged RET(C634Y) protein (lane1) and corresponding wild type protein (lane2) were blotted with Anti-RET(C634Y) monoclonal antibody (货号:26146).

免疫沉淀/蛋白质E

迹: Immunofluorescence of cells expressing RET proteins with Anti-RET(C634Y) antibody. HEK293T cells were transfected with pCDNA3-GFP-RET (WT) plasmid (left column) or pCDNA3-GFP-RET (C634Y) plasmid (right column), then fixed and stained with Anti-RET (C634Y) monoclonal antibody (货号:26146).

