

CTLA4 MAB (REFERENCE MAB)

货号: 28031

产品全名: CTLA4 Reference 单抗

基因符号: CTLA4;CD152

描述: CTLA4 Reference 单抗

背景: Research grade biosimilar. Not for use in therapeutic or diagnostic procedures for humans or animals.

经过测试的应用: ELISA; Flow Cyt

推荐稀释比: ELISA 1:5000-10000; Flow Cyt 1:100

种属反应性: Homo sapiens

亚型: IgG1

纯化: Purified from cell culture supernatant by affinity chromatography

种属反应性: 人 CTLA-4

成分: Lyophilized from sterile PBS, pH 7.4. 5% - 8% trehalose is added as protectants before lyophilization.

储存和运输: Store at -20°C to -80°C for 12 months in lyophilized form. After reconstitution, if not intended for use within a month, aliquot and store at -80°C (Avoid repeated freezing and thawing).

Anti-CTLA4 (ipilimumab biosimilar) mAb ELISA

0.2 µg of CTLA-4, mFc-His Tagged protein per well

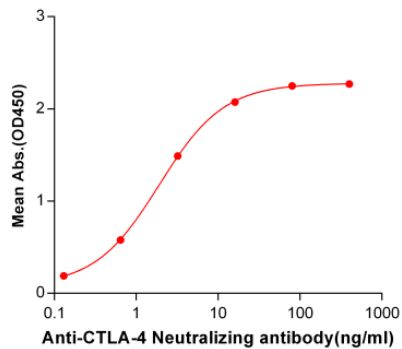


Figure 1. ELISA plate pre-coated by 2 µg/ml (100 µl/well) Human CTLA4, mFc-His tagged protein 11145 can bind Anti-CTLA4 Neutralizing antibody in a linear range of 0.13-16.0 ng/ml.

Anti-CTLA4 (ipilimumab biosimilar) mAb ELISA

0.2 µg of CTLA-4, hFc Tagged protein per well

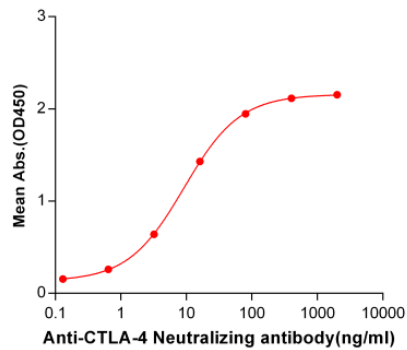


Figure 2. ELISA plate pre-coated by 2 µg/ml (100 µl/well) Human CTLA4, hFc tagged protein (11289) can bind Anti-CTLA4 Neutralizing antibody in a linear range of 0.64-80.0 ng/ml. In order to specifically detect 28031, mouse anti-human Fab-specific antibody was used as detection antibody.

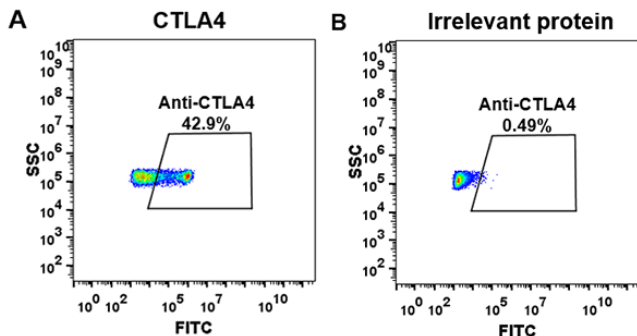


Figure 3. HEK293 cell line transfected with irrelevant protein (B) and human CTLA4 (A) were surface stained with anti-CTLA4 neutralizing antibody 1 µg/ml (ipilimumab) followed by Alexa 488-conjugated anti-human IgG secondary antibody.