

## RAS(G12D)

产品名称: Ras(G12D) 小鼠单抗

货号: 26036

基因符号: RAS(G12D)

描述: Ras(G12D) 小鼠单抗

背景: Ras (G12D) is one type of Ras missense mutations at the codon 12. Ras protein is a membrane-associated GTPase that regulates cell proliferation, differentiation, and survival. Ras G12D mutation results in decreased GTPase activity and constitutive signaling. This mutation is found in many types of human cancers.

免疫原: A synthetic peptide from the internal region of Ras which includes the mutation of G12D, human origin

经过测试的应用: ELISA, WB, IF, IHC

推荐稀释比: ELISA: 1:100-1:3000WB: 1:100-1:1000IF: 1:50-1:100IHC: 1:50-1:100

**Concentration:** 1 mg/ml

种属反应性: **Mouse**

形式: Liquid

克隆性: Monoclonal

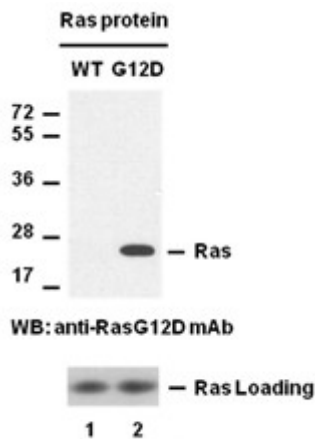
亚型: IgG1, IgG2a, IgG2b

纯化: Purified from ascites

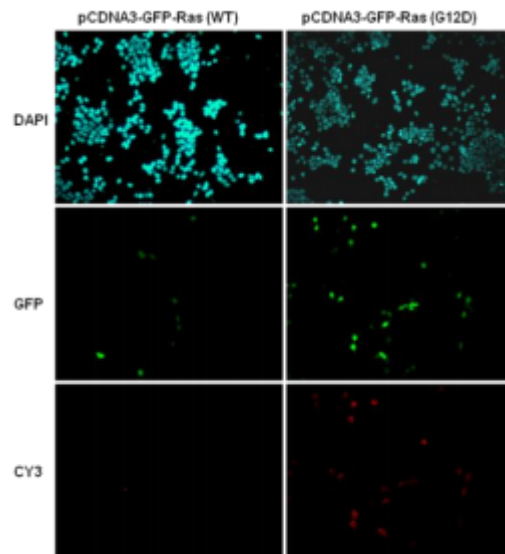
成分: PBS (without  $Mg^{2+}$  and  $Ca^{2+}$ ), pH 7.4, 150 mM NaCl, 50% glycerol

种属反应性: Ras(G12D) antibody recognizes Ras(G12D) proteins of vertebrates

储存条件: Store at  $-20^{\circ}C$ . Avoid repeated freezing and thawing



**蛋白质印迹: Western blot analysis of recombinant Ras WT and G12D proteins.** Equal amounts of purified Ras WT (lane 1, Cat # 10172) and G12D (lane 2, Cat # 10154) proteins were loaded and blotted with anti-Ras G12D 小鼠单抗 (Cat # 26036) (Top panel). Input control (bottom panel) was blotted with rabbit polyclonal anti-Ras antibody (Cat #



21021). **Immunofluorescence of cells expressing RAS proteins with anti-RAS (G12D) antibody.** HEK293T cells were transfected with pCDNA3-GFP-Ras(WT) plasmid (left column) or pCDNA3-GFP Ras(G12D) plasmid (right column), then fixed and stained with anti-Ras(G12D) monoclonal antibody (货号: 26036).