

RAN PAB

产品名称: Ran 兔多抗

货号: 21097

基因符号: RAN

描述: Ran 兔多抗

背景: Ran (Ras-related nuclear protein) is a member of the Ras-superfamily GTPases. Ran is involved in the transport of proteins across the nuclear envelope, as well as in microtubule organization during mitosis.

免疫原: A synthetic peptide from the C-terminal region of human Ran

经过测试的应用: ELISA, WB, IHC

推荐稀释比: ELISA 1:100-1:5000

WB 1:100-1:2000

IHC 1:100-1:1000

Concentration: 0.2 mg/ml

种属反应性: Rabbit

形式: Liquid

克隆性: Polyclonal

亚型: IgG

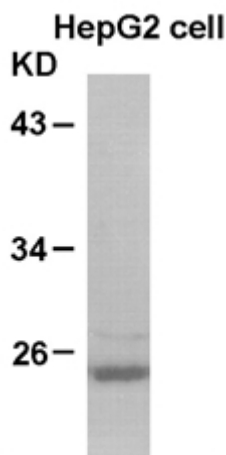
纯化: Purified from serum

成分: PBS (without Mg^{2+} and Ca^{2+}), pH 7.4, 150 mM NaCl, 50% glycerol

种属反应性: Ran antibody recognizes Ran of vertebrates.

储存条件: Store at $-20^{\circ}C$. Avoid repeated freezing and thawing

蛋白质印迹:



WB: anti-Ran pAb

Western blot analysis of Ran proteins. Whole-cell lysate of HepG2 cells was used for western blots with the polyclonal anti Ran antibody (Cat # 21097).



Product Description

Pioneering GTPase and Oncogene Product Development since 2010
