

RAN MAB

产品名称: Ran 小鼠单抗

货号: 26020

基因符号: RAN

描述: Ran-小鼠单抗

背景: Ran (Ras-related nuclear protein) is a member of the Ras-superfamily GTPases. Ran is involved in the transport of proteins across the nuclear envelope, as well as in microtubule organization during mitosis.

免疫原: Recombinant full length protein of Ran

经过测试的应用: ELISA, WB, IP, IHC

推荐稀释比: ELISA: 1:1000-1:5000WB: 1:100-1:2000IP: 1 µg for 1~2 mg total cellular proteinsIHC: 1:100 dilution

Concentration: 1 mg/ml

种属反应性: Mouse

形式: Liquid

克隆性: Monoclonal

亚型: IgG

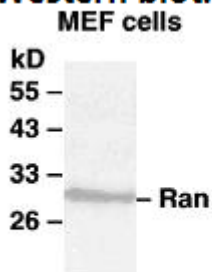
纯化: Purified from ascites

成分: PBS (without Mg²⁺ and Ca²⁺), pH 7.4, 150 mM NaCl, 50% glycerol

种属反应性: Ran antibody recognizes Ran of vertebrates.

储存条件: Store at -20°C. Avoid repeated freezing and thawing

Western blot:



WB: anti-Ran mAb

蛋白质印迹:

Western blot analysis of Ran proteins. Whole-cell lysate of MEF cells was used for western blots with the monoclonal anti-Ran antibody (货号: 26020).



Product Description

Pioneering GTPase and Oncogene Product Development since 2010
