

## RAN-GTP

产品名称: Ran-GTP 小鼠单抗

货号: 26915

规格: 30  $\mu$ L

基因符号: RAN

描述: Ran-GTP 小鼠单抗

背景: Ran (Ras-related nuclear protein) is a member of the Ras-superfamily GTPases. Ran is involved in the transport of proteins across the nuclear envelope, as well as in microtubule organization during mitosis.

免疫原: Recombinant full length protein of active Ran.

经过测试的应用: IP, IHC and IF (**Not applicable for WB since WB denatures the GTPase**)

推荐稀释比:

IP: 1  $\mu$ g for 1~2 mg total cellular proteins

IHC, IF: 1:50-1:250

**Concentration:** 1 mg/ml

种属反应性: Mouse

形式: Liquid

克隆性: Monoclonal

亚型: IgG

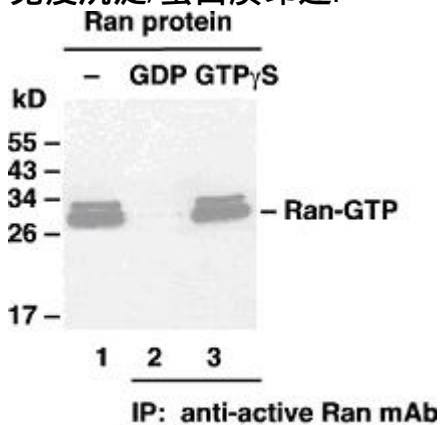
纯化: Purified from ascites

成分: PBS (without  $Mg^{2+}$  and  $Ca^{2+}$ ), pH 7.4, 150 mM NaCl, 50% glycerol

种属反应性: Ran-GTP monoclonal antibody recognizes active Ran of vertebrates.

储存条件: Store at  $-20^{\circ}C$ . Avoid freeze/thaw cycles

## 免疫沉淀/蛋白质印迹:



WB: anti-Ran pAb

Ran Activation Assay. Purified Ran proteins were loaded as a control (lanes 1) or immunoprecipitated after treated with GDP (lane 2) or GTP $\gamma$ S (lane 3). Immunoprecipitation was done with the anti-Ran-GTP monoclonal antibody (货号: 26915). Immunoblot was with an anti-Ran 兔多抗.