

RALB PROTEIN**RalB Protein**

货号: 10169

产品名称: RalB Protein

基因符号: v-ral simian leukemia viral oncogene homolog B

Source: Human, recombinant full length, His6-tag

Expression 种属反应性: E. coli

Molecular Weight: 23 kDa

纯化: >95% by SDS-PAGE

Introduction: The Ras-like small G proteins, RalA/B, are important components of Ras signaling pathways, implicated in the initiation and maintenance of tumorigenic transformation, as well as vesicle transport, apoptosis, transcription, cell migration, and cell proliferation.

Amino Acid Sequence (1-206)

MAANKSKGQSSLALHKVIMVGGVGKSALTQLQFMYDEFVEDYEPTKADSYRKKVVLGDGEEVQIDIL
DTAGQEDYAAIRDNYFRSGEGFLLVFSITEHESFTATAEFREQILRVKAEEDKIPLLVGNGKSDLEE
RRQVPVEEARSKAEEWGVQYVETSAKTRANVDKVFFDLRMREIRTKKMSENKDKNGKKSSKNKKSFKERCCLL

Properties

Physical Appearance (form): Dissolved in 20mM Tris-HCl, pH8.0, 150mM NaCl.

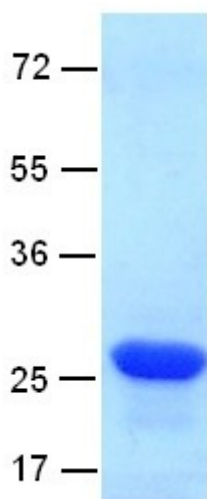
Physical Appearance (form): White or clear

浓度: 1 mg/mL

Storage: -80°C

Preparation Instructions:

Centrifuge the vial before open the cap and reconstitute in water. Adding of 10 mM β -mercaptoethanol or 1 mM DTT into the solution to protect the protein is recommended and using of non-ionic detergents such as n-Dodecyl β -D-maltoside (DoDM) or polyethylene detergents (e.g. C12E10) also help to stabilize the protein. Avoid repeated freezing and thawing after reconstitution. The purity of His-tagged RalB was determined by SDS- PAGE and Coomassie Brilliant Blue Staining.



References:

1. Chien, Y. et al., Cell 127: 157-170, 2006.
2. Hsieh, C.-L. et al., Somat. Cell Molec. Genet. 16: 407-410, 1990