

RAB8A PAB

产品名称: Rab8A 兔多抗

货号: 21071

基因符号: RAB8A

描述: Rab8A 兔多抗

背景: Rab8A is involved in polarized trafficking of vesicles from the trans-Golgi network, and is the only RAB-family protein identified in mammalian cilia.

免疫原: A synthetic peptide from the N-terminal region of human Rab8A

经过测试的应用: ELISA, WB, IHC

推荐稀释比:

ELISA: 1:100-1:5000

WB: 1:100-1:2000

IHC: 1:100-1:1000

Concentration: 0.2 mg/ml

种属反应性: Rabbit

形式: Liquid

克隆性: Polyclonal

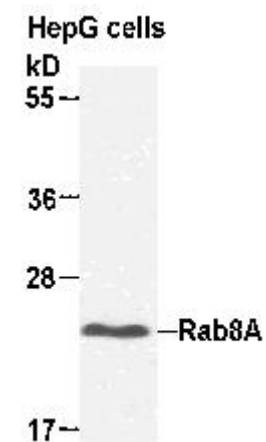
纯化: Purified from serum

成分: PBS (without Mg^{2+} and Ca^{2+}), pH 7.4, 150 mM NaCl, 50% glycerol

种属反应性: Rab2A antibody recognizes Rab2A from vertebrates.

储存条件: Store at $-20^{\circ}C$. Avoid repeated freezing and thawing

蛋白质印迹:



WB: anti-Rab8A pAb

HepG cell lysate was used for Western blot with anti Rab8A 兔多抗 (cat # 21071).