

RAB7A PAB

产品名称: Rab7A 兔多抗

货号: 21069

基因符号: RAB7A

描述: Rab7A 兔多抗

背景: Rab7A belongs to the Rab family of small GTPases. Rab7A is located in the late endosome, lysosome, cytoplasmic vesicle, phagosome and melanosome. It is involved in the late endocytic transport and contributes to the maturation of phagosomes.

免疫原: A synthetic peptide near the C-terminus of Rab7A of human origin.

经过测试的应用: ELISA, WB, IHC, IP

推荐稀释比:

ELISA: 1:100-1:5000

WB: 1:100-1:2000

IHC: 1:10-1:100

Concentration: 0.2 mg/ml

种属反应性: Rabbit

形式: Liquid

克隆性: Polyclonal

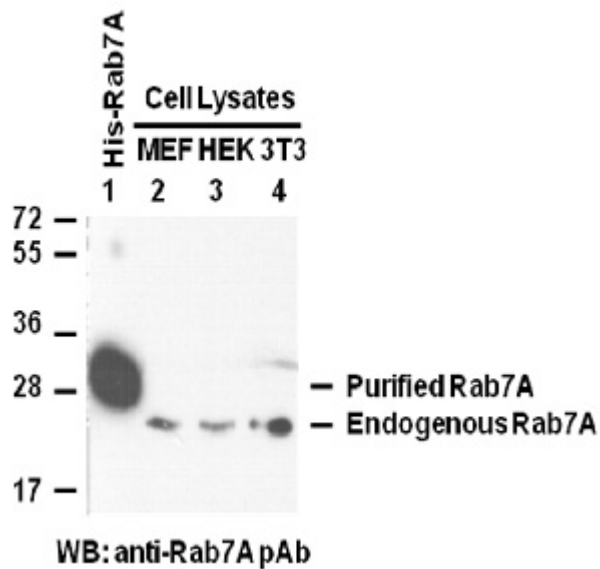
纯化: Purified from serum

成分: PBS (without Mg^{2+} and Ca^{2+}), pH 7.4, 150 mM NaCl, 50% glycerol

种属反应性: Rab7A antibody recognizes Rab7A from vertebrates.

储存条件: Store at $-20^{\circ}C$. Avoid repeated freezing and thawing

蛋白质印迹:



Purified recombinant His-tagged Rab7A protein (lane 1, Cat # 10167), MEF (lane 2), HEK293 (lane 3) and NIH 3T3 (lane 4) cell lysates were used for Western blot with anti Rab7A 兔多抗 (Cat # 21069).