

RAB6A PAB

产品名称: Rab6A

货号: 21068

基因符号: RAB6A

描述: Rab6A 兔多抗

背景: The small GTPase Rab6 regulates vesicle trafficking at the level of Golgi. There are three forms of Rab6: Rab6A, Rab6A' (also called Rab6C) and Rab6B. Rab6A and Rab6C are splice variants of the same gene. Rab6A is localized in the Golgi and regulates a COPI-independent pathway of retrograde membrane transport from the Golgi complex to the endoplasmic reticulum.

免疫原: A synthetic peptide from the internal region of huamn Rab6A 蛋白

经过测试的应用: ELISA, WB, IHC

推荐稀释比: ELISA 1:100-1:5000

WB 1:100-1:1000

IHC 1:100-1:1000

Concentration: 0.2 mg/ml

种属反应性: Rabbit

形式: Liquid

克隆性: Polyclonal

亚型: IgG

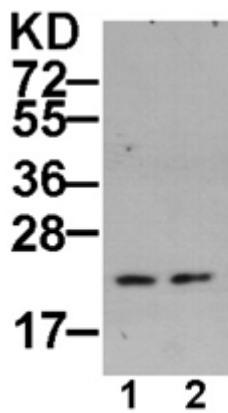
纯化: Purified from serum

成分: PBS (without Mg^{2+} and Ca^{2+}), pH 7.4, 150 mM NaCl, 50% glycerol

种属反应性: Rab6A antibody recognizes Rab6A proteins from vertebrates.

储存条件: Store at $-20^{\circ}C$. Avoid repeated freezing and thawing

蛋白质印迹:



WB: anti-Rab6A pAb

HEK-293T (lane 1) and MEF (lane 2) whole-cell extracts were used for Western blot with anti Rab6A 兔多抗 (cat # 21068).