

## RAB5C PAB

产品名称: Rab5C 兔多抗

货号: 21038

基因符号: RAB5C

描述: Rab5C 兔多抗

背景: Rab5, consists of three isoforms, Rab5A, Rab5B, and Rab5C, is a small GTPase that is localized to early endosomes. It regulates the fusion between endocytic vesicles and early endosomes, as well as the homotypic fusion between early endosomes.

免疫原: A synthetic peptide from Rab5C

经过测试的应用: ELISA, WB, IHC

推荐稀释比: ELISA 1:100-1:5000

WB 1:100-1:1000

IHC 1:100-1000

**Concentration:** 0.2 mg/ml

种属反应性: Rabbit

形式: Liquid

克隆性: Polyclonal

亚型: IgG

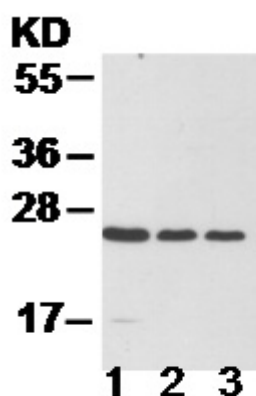
纯化: Purified from serum

成分: PBS (without  $Mg^{2+}$  and  $Ca^{2+}$ ), pH 7.4, 150 mM NaCl, 50% glycerol

种属反应性: Rab5C antibody recognizes Rab5C from vertebrates.

储存条件: Store at  $-20^{\circ}C$ . Avoid repeated freezing and thawing

蛋白质印迹:



**WB: anti-Rab5C pAb**

EC-1 (lane 1), HEK-293T (lane 2) and MEF (lane 3) cell lysates were used for Western blot with anti Rab5C 兔多抗 (cat # 21038).



# Product Description

Pioneering GTPase and Oncogene Product Development since 2010

---