

RAB3D PAB

产品名称: Rab3D 兔多抗

货号: 21044

基因符号: RAB3D

描述: Rab3D 兔多抗

背景: Rab3D is a small GTP-binding protein that associates with secretory granules of endocrine and exocrine cells. Rab3D is involved in the biogenesis of secretory granules and also associates with early Golgi compartments.

免疫原: A synthetic peptide from the C-terminal region of human Rab3D

经过测试的应用: ELISA, WB, IHC

推荐稀释比:

ELISA: 1:100-1:5000

WB: 1:100-1:2000

IHC: 1:100-1:1000

Concentration: 0.2 mg/ml

种属反应性: Rabbit

形式: Liquid

克隆性: Polyclonal

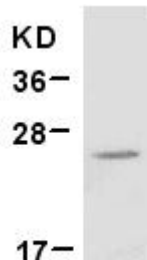
纯化: Purified from serum

成分: PBS (without Mg^{2+} and Ca^{2+}), pH 7.4, 150 mM NaCl, 50% glycerol

种属反应性: Rab3D antibody recognizes Rab3D from vertebrates.

储存条件: Store at $-20^{\circ}C$. Avoid repeated freezing and thawing

蛋白质印迹:



WB: anti-Rab3D pAb

EC-1 cell lysate was used for Western blot with anti Rab3D 兔多抗 (cat # 21044).



Product Description

Pioneering GTPase and Oncogene Product Development since 2010
