

## RAB3C PAB

产品名称: Rab3C 兔多抗

货号: 21043

基因符号: RAB3C

描述: Rab3C 兔多抗

背景: The Rab3 small G protein family consists of four members, Rab3A, -3B, -3C, and -3D. Rab3C is a small GTP-binding protein that associates with secretory granules of endocrine and exocrine cells. Rab3C is found in brain, adrenal gland and pituitary.

免疫原: A synthetic peptide from the N-terminal region of human Rab3C

经过测试的应用: ELISA, WB, IHC

推荐稀释比:

ELISA: 1:100-1:5000

WB: 1:100-1:2000

IHC: 1:100-1:1000

**Concentration:** 0.2 mg/ml

种属反应性: Rabbit

形式: Liquid

克隆性: Polyclonal

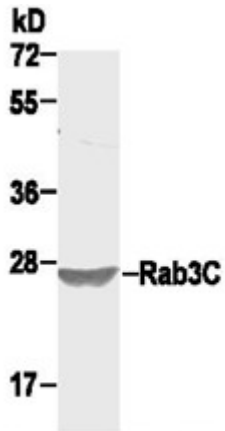
纯化: Purified from serum

成分: PBS (without  $Mg^{2+}$  and  $Ca^{2+}$ ), pH 7.4, 150 mM NaCl, 50% glycerol

种属反应性: Rab3C antibody recognizes Rab3C from vertebrates.

储存条件: Store at  $-20^{\circ}C$ . Avoid repeated freezing and thawing

蛋白质印迹:



WB: anti-Rab3C pAb

HepG cell lysate was used for Western blot with anti Rab3C 兔多抗 (cat # 21043).