

## RAB38 PAB

产品名称: Rab38 兔多抗

货号: 21081

基因符号: RAB38

描述: Rab38 兔多抗

背景: Rab38 is a small GTPase highly expressed in melanocytes. A point mutation in Rab38 has been identified as the genetic lesion responsible for oculocutaneous albinism in chocolate mice. Another point mutation that prevents translation of Rab38 mRNA is the molecular basis of the Ruby gene mutation causing the phenotype of oculocutaneous albinism and prolonged bleeding time in Fawn-Hooded and Tester-Moriyama rats.

免疫原: A synthetic peptide from the internal region of human Rab38 蛋白

经过测试的应用: ELISA, WB, IHC, IP

推荐稀释比: ELISA 1:1000-1:5000

WB 1:100-1:1000

IHC 1:100-1:1000

### **Concentration:**

种属反应性: Rabbit

形式: Liquid

**Z43**克隆性: Polyclonal

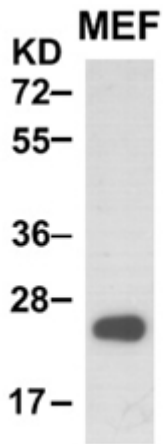
纯化: Purified from serum

成分: PBS (without  $Mg^{2+}$  and  $Ca^{2+}$ ), pH 7.4, 150 mM NaCl, 50% glycerol

种属反应性: Rab38 antibody recognizes Rab38 proteins from vertebrates.

储存条件: Store at  $-20^{\circ}C$ . Avoid repeated freezing and thawing

蛋白质印迹:



**WB: anti-Rab38 pAb**

MEF whole-cell lysate was used for Western blot with anti Rab38 兔多抗 (cat # 21081).