

## RAB35(Q67L) PROTEIN

产品名称: Rab35(Q67L) 突变蛋白

货号: 10133

产品全名: Rab35 Protein Q67L 突变蛋白

基因符号 Member RAS oncogene family, RAY, H-ray, RAB1C

**Source:** Human, recombinant full length, His6-tag

**Expression 种属反应性:** E. coli

分子量: 23 kDa

纯化: >95% by SDS-PAGE

**Introduction:** The Ras super-family of small GTP-binding proteins, which includes the Ras, Ral, Rho, Rap, and Rab families, the Rab family appears to play a critical role in regulating exocytotic and endocytotic pathways. RAB35 regulates the assembly of actin filaments during bristle development in *Drosophila* and filopodia formation in cultured cells.

**Amino Acid Sequence** (1-201, Q67L)

**MARDYDHLFKLLIIGDSGVGKSSLLRFADNTFSGSYITTIGVDFKIRTVEINGEKVKLQIWDTAGL  
ERFRITSTYYRGTHGVIVVYDVTSAESFVNVKRWLHEINQNCDDVCRILVGNKNDPPERKVVETED  
AYKFAGQMGIQLFETSAKENVNVEEMFNCITELVLRAKKDNLAKQQQQQNDVVKLTKNKRKRRC**

### Properties

**Physical Appearance (form):** Dissolved in 20mM Tris-HCl, pH8.0, 150mM NaCl.

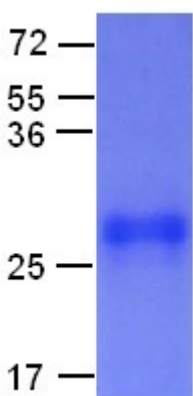
**Physical Appearance (form):** White or clear

**Concentration:** 1 mg/mL

**Storage:** -80°C

### Preparation Instructions:

Centrifuge the vial before open the cap and reconstitute in water. Adding of 10 mM  $\beta$ -mercaptoethanol or 1 mM DTT into the solution to protect the protein is recommended and using of non-ionic detergents such as n-Dodecyl  $\beta$ -D-maltoside (DoDM) or polyethylene detergents (e.g. C12E10) also help to stabilize the protein. Avoid repeated freezing and thawing after reconstitution. The purity of His-tagged Rab35 QL was determined by SDS-PAGE and Coomassie Brilliant Blue Staining.



### References:

1. Zhang, J. et al., Science 325:1250-1254, 2009.

2. Zhu, A. X. et al., Biochem. Biophys. Res. Commun. 205: 1875-1882, 1994.