

RAB30 PAB

产品名称: Rab30 兔多抗

货号: 21062

基因符号: RAB30

描述: Rab30 兔多抗

背景: Rab30 is a member of the Ras-super-family small GTPases. Rab30 is involved in intracellular trafficking, and is localized in trans-Golgi.

免疫原: A synthetic peptide from the C-terminal of human Rab30 蛋白

经过测试的应用: ELISA, WB, IHC, IP

推荐稀释比:

ELISA: 1:100-1:5000

WB: 1:100-1:1000

IHC: 1:100-1:1000

Concentration: 0.2 mg/ml

种属反应性: Rabbit

形式: Liquid

克隆性: Polyclonal

亚型: IgG

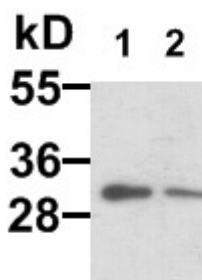
纯化: Purified from serum

成分: PBS (without Mg^{2+} and Ca^{2+}), pH 7.4, 150 mM NaCl, 50% glycerol

种属反应性: Rab30 antibody recognizes Rab30 proteins from vertebrates.

储存条件: Store at $-20^{\circ}C$. Avoid repeated freezing and thawing

蛋白质印迹:



WB:anti-Rab30 pAb

EC-1 (lane 1) and HepG2 (lane 2) whole-cell lysates were used for Western blots with anti Rab30 兔多抗 (cat # 21062).



Product Description

Pioneering GTPase and Oncogene Product Development since 2010
