

## RAB2A PAB

产品名称: Rab2A 兔多抗

货号: 21039

基因符号: RAB2A

描述: Rab2A 兔多抗

背景: Rab2 is one of the Rab family of proteins that participate in compartment specific transport events of both the endocytic and the exocytic pathways through recruitment and interaction with effector molecules. Rab2 is highly expressed in the nervous system. Rab2 is essential for membrane trafficking in the early secretory pathway. Rab2 associates with vesicular tubular clusters located between the endoplasmic reticulum and the Golgi complex.

免疫原: A synthetic peptide from the N-terminal region of human Rab2A

经过测试的应用: ELISA, WB, IHC

推荐稀释比:

ELISA: 1:100-1:5000

WB: 1:100-1:2000

IHC: 1:100-1:1000

**Concentration:** 0.2 mg/ml

种属反应性: Rabbit

形式: Liquid

克隆性: Polyclonal

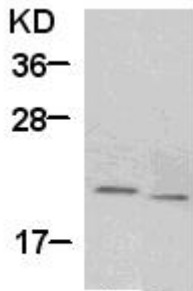
纯化: Purified from serum

成分: PBS (without  $Mg^{2+}$  and  $Ca^{2+}$ ), pH 7.4, 150 mM NaCl, 50% glycerol

种属反应性: Rab2A antibody recognizes Rab2A from vertebrates.

储存条件: Store at  $-20^{\circ}C$ . Avoid repeated freezing and thawing

蛋白质印迹:



WB: anti-Rab2A pAb

HepG2 (lane 1) and HEK-293T (lane 2) cell lysates were used for Western blot with anti Rab2A 兔多抗 (cat # 21039).