

## RAB13 PAB

产品名称: Rab13 兔多抗

货号: 21046

基因符号: RAB13

描述: Rab13 兔多抗

背景: Rab GTPases are Ras-like small molecular weight GTP-binding proteins that are involved in various steps along the exocytic and endocytic pathways. Rab13 plays a critical role in regulating both the structure and function of tight junctions in polarized epithelial cells.

免疫原: A synthetic peptide from the internal region of human Rab13 蛋白

经过测试的应用: ELISA, WB, IHC, IP

推荐稀释比:

ELISA: 1:100-1:5000

WB: 1:100-1:1000

IHC: 1:10-1:500

**Concentration:** 0.2 mg/ml

种属反应性: Rabbit

形式: Liquid

克隆性: Polyclonal

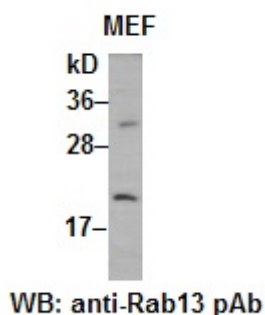
亚型: IgG

纯化: Purified from serum

成分: PBS (without  $Mg^{2+}$  and  $Ca^{2+}$ ), pH 7.4, 150 mM NaCl, 50% glycerol

种属反应性: Rab13 antibody recognizes Rab13 proteins from vertebrates.

储存条件: Store at  $-20^{\circ}C$ . Avoid repeated freezing and thawing



MEF whole-cell lysate was used for Western blot with anti-Rab13 兔多抗 (cat # 21046).



# Product Description

Pioneering GTPase and Oncogene Product Development since 2010

---