

## GM-CSF MAB (PLONMARLIMAB)

货号: 28125

产品全名: GM-CSF(Plonmarlimab) 单抗

基因符号 CSF;CSF2

描述: GM-CSF(plonmarlimab) 单抗

背景: Research grade biosimilar. Not for use in therapeutic or diagnostic procedures for humans or animals.

经过测试的应用: ELISA; Flow Cyt

推荐稀释比: ELISA 1:5000-10000; Flow Cyt 1:100

种属反应性: Humanized

亚型: IgG1

纯化: Purified from cell culture supernatant by affinity chromatography

种属反应性: 人 GM-CSF

成分: Lyophilized from sterile PBS, pH 7.4. 5% – 8% trehalose is added as protectants before lyophilization.

储存和运输: Store at  $-20^{\circ}\text{C}$  to  $-80^{\circ}\text{C}$  for 12 months in lyophilized form. After reconstitution, if not intended for use within a month, aliquot and store at  $-80^{\circ}\text{C}$  (Avoid repeated freezing and thawing).

**Anti-GM-CSF (plonmarlimab biosimilar) mAb ELISA**  
0.2  $\mu\text{g}$  of Human GM-CSF, hFc tagged protein per well

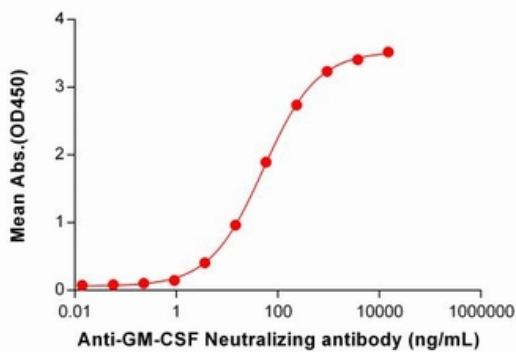


Figure 1. ELISA plate pre-coated by 2  $\mu\text{g}/\text{mL}$  (100  $\mu\text{l}/\text{well}$ ) Human GM-CSF Protein, hFc Tag (11365) can bind Anti-GM-CSF Neutralizing antibody (28125) in a linear range of 0.92-937.50 ng/mL. In order to specifically detect 28125, mouse anti-human Fab-specific antibody was used as detection antibody.

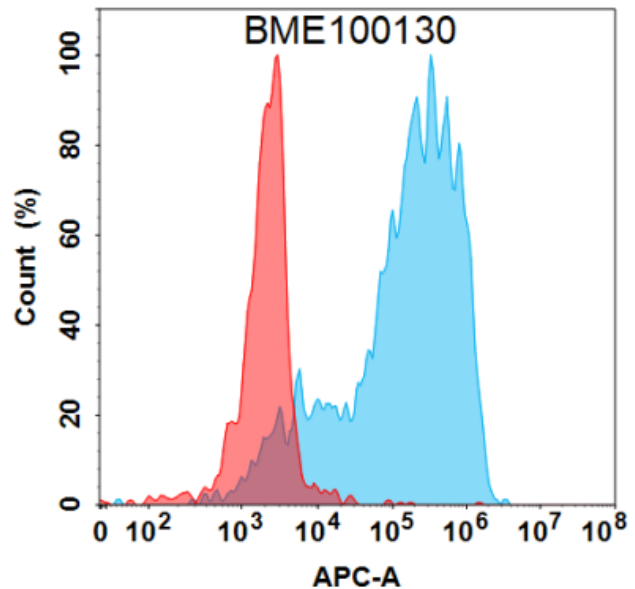


Figure 2. Flow cytometry analysis under cell membrane permeable condition with 1  $\mu\text{g}/\text{mL}$  Anti-GM-CSF (plonmarlimab biosimilar) mAb (28125) on Expi293 cells transfected with Human GM-CSF protein (Blue histogram) or Expi293 transfected with irrelevant protein (Red histogram).



# Product Description

Pioneering GTPase and Oncogene Product Development since 2010

---