

## PGF (DM190) RABBIT MAB

货号: 28533

产品全名: PGF(DM190) 兔单克隆抗体

基因符号 DI2S1900; PGFL; PIGF; PLGF; PIGF-2; SHGC-10760

描述: PGF antibody(DM190) 兔单克隆抗体

背景: This gene encodes a growth factor found in placenta which is homologous to vascular endothelial growth factor. Alternatively spliced transcripts encoding different isoforms have been found for this gene.

经过测试的应用: ELISA; Flow Cyt

推荐稀释比: ELISA 1:5000-10000; Flow Cyt 1:100

种属反应性: Rabbit

亚型: Rabbit IgG

纯化: Purified from cell culture supernatant by affinity chromatography

种属反应性: 人 PGF

成分: Lyophilized from sterile PBS, pH 7.4. 5% - 8% trehalose is added as protectants before lyophilization.

储存和运输: Store at  $-20^{\circ}\text{C}$  to  $-80^{\circ}\text{C}$  for 12 months in lyophilized form.

After reconstitution, if not intended for use within a month, aliquot and store at  $-80^{\circ}\text{C}$  (Avoid repeated freezing and thawing).

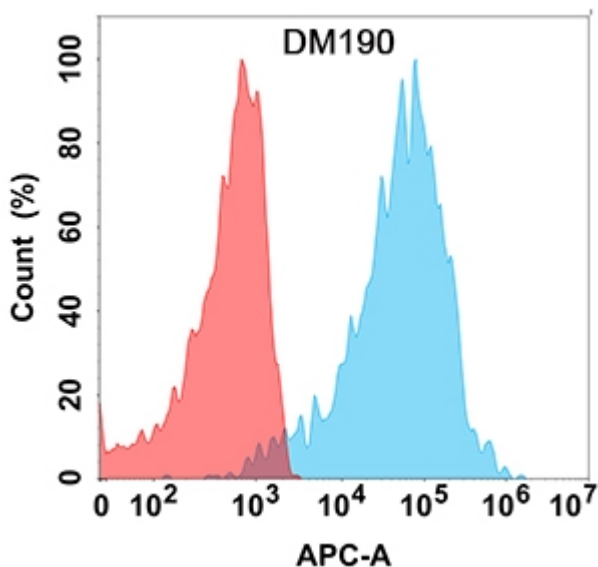


Figure 1. Flow cytometry analysis with Anti-PGF (DM190) on Expi293 cells transfected with human PGF (Blue histogram) or Expi293 transfected with irrelevant protein (Red histogram).



# Product Description

Pioneering GTPase and Oncogene Product Development since 2010

---