

ORAI1-L2 PAB

Orail-L2 Polyclonal Antibody

货号: 21002

基因符号: Orail

描述: Orail-L2 Rabbit Polyclonal Antibody

背景: Store-operated calcium channels (SOCs) play essential functions in various physiological processes. Orail (also named CRACM1) is a critical molecular component of SOCs. Orail protein is a ~35 kDa plasma membrane protein with 4 transmembrane domains. Human patients with a severe combined immunodeficiency (SCID) syndrome possess point mutations in Orail gene.

免疫原: A peptide from the extracellular loop 2 region of human Orail

经过测试的应用: ELISA, WB

推荐稀释度:

ELISA: 1:1000-1:5000,

WB: 1:1000-1:2000,

IHC: 1:100-1:200

浓度:

种属反应性: Rabbit

形式: Liquid

克隆性: Polyclonal

亚型: IgG

纯化:: Immunogen affinity purified

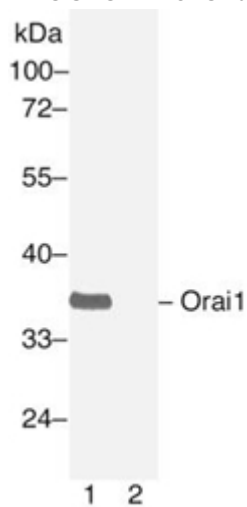
Preservative: 0.01% sodium azide

成分: 50mM NaHCO₃-Glycine, 0.15M NaCl,, pH7.4

种属反应性: Orail-L2 antibody recognizes Orail from human.

储存条件:: Store at -20°C. Avoid repeated freezing and thawing

Western blot:



Western blot analysis of Orai1 protein.

Human Orai1 plasmid DNA was transiently transfected into HEK-293 cells. Whole-cell lysate was used for western blot in the absence (A) or presence (B) of antigen peptide.