

NFE2L2 MAB

产品名称: NFE2L2 Monoclonal

货号: 26358

基因符号: NFE2L2, NRF2

描述: NFE2L2 小鼠单抗

背景: NFE2L2 protein is encoded by NFE2L2 gene. It is a basic leucine zipper protein that regulates the expression of antioxidant proteins that protect against oxidative damage triggered by injury and inflammation. Several drugs that stimulate the NFE2L2 pathway are being studied for treatment of diseases that are caused by oxidative stress.

免疫原: Recombinant full length protein of NFE2L2

经过测试的应用: ELISA, WB, IF, IHC

推荐稀释比: ELISA: 1:1000-1:2000 WB: 1:500-1:1000 IF: 1:50-1:100 IHC: 1:10-1:100

Concentration: 1 mg/ml

种属反应性: Mouse

形式: Liquid

克隆性: Monoclonal

亚型: IgG

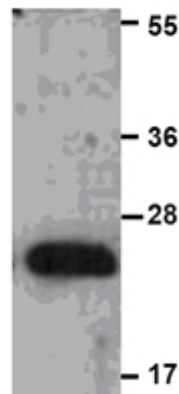
纯化: Purified from ascites

成分: PBS (without Mg²⁺ and Ca²⁺), pH 7.4, 150 mM NaCl, 50% glycerol

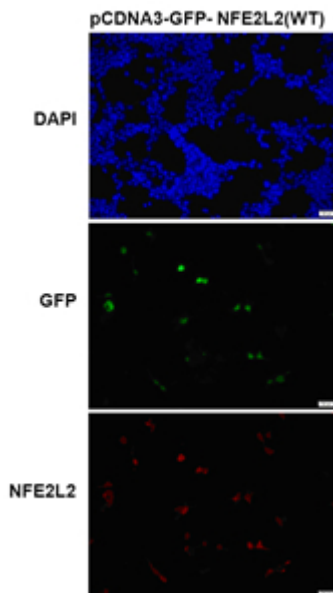
种属反应性: Recognizes wild type NFE2L2 protein of vertebrates.

储存条件: Store at -20°C. Avoid repeated freezing and thawing

NFE2L2 protein



蛋白质印迹: WB: anti-NFE2L2 WT mAb Western blot analysis of recombinant NFE2L2 protein. Purified His-tagged NFE2L2 protein was blotted with Anti-NFE2L2 monoclonal antibody (货号:26358). **Immunofluorescence:**



Immunofluorescence of cells expressing NFE2L2 protein with Anti-NFE2L2 antibody. HEK293T cells were transfected with pCDNA3-GFP-NFE2L2 (WT) plasmid, then fixed and stained with Anti-NFE2L2 monoclonal antibody (货号:26358).