

MOUSE HBEGF (24-160) PROTEIN, HFC TAG

货号: 12142

产品全名: Mouse HBEGF (24-160) 蛋白

规格: 10/50/100 µg

基因符号 AW047313;Dtr;Dts;Hegfl

目标蛋白: HBEGF

UNIPROT ID: Q06186

描述: Recombinant mouse HBEGF(24-160) protein with C-terminal human Fc tag

背景: Growth factor that mediates its effects via EGFR, ERBB2 and ERBB4. Required for normal cardiac valve formation and normal heart function. Promotes smooth muscle cell proliferation. May be involved in macrophage-mediated cellular proliferation. It is mitogenic for fibroblasts, but not endothelial cells. It is able to bind EGF receptor/EGFR with higher affinity than EGF itself and is a far more potent mitogen for smooth muscle cells than EGF. Also acts as a diphtheria toxin receptor.[UniProtKB/Swiss-Prot Function]

物种/宿主: HEK293

分子量: The protein has a predicted molecular mass of 41.3 kDa after removal of the signal peptide. The apparent molecular mass of mHBEGF(24-160)-hFc is approximately 40-55 kDa due to glycosylation.

分子特征: Mouse HBEGF(24-160)(Gln24-Thr160) hFc(Glu99-Ala330)

纯化: The purity of the protein is greater than 95% as determined by SDS-PAGE and Coomassie blue staining.

Formulation & Reconstitution: Lyophilized from nanodisc solubilization buffer (20 mM Tris-HCl, 150 mM NaCl, pH 8.0). Normally 5% – 8% trehalose is added as protectants before lyophilization.

储存和运输: Store at -20°C to -80°C for 12 months in lyophilized form. After reconstitution, if not intended for use within a month, aliquot and store at -80°C (Avoid repeated freezing and thawing). Lyophilized proteins are shipped at ambient temperature.

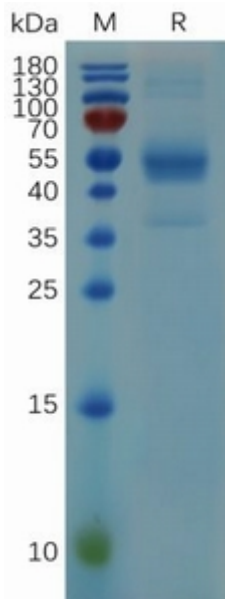


Figure 1. Mouse HBEGF (24-160) Protein, hFc Tag on SDS-PAGE under reducing condition.