

## M-CSF (DMC437) IGG1 CHIMERIC MAB

货号: 28225

产品全名: M-CSF(DMC437) IgG1 Chimeric 单抗

基因符号 CSF-1; MCSF

描述: M-CSF antibody(DMC437) IgG1 Chimeric 单抗

背景: The protein encoded by this gene is a cytokine that controls the production; differentiation; and function of macrophages. The active form of the protein is found extracellularly as a disulfide-linked homodimer; and is thought to be produced by proteolytic cleavage of membrane-bound precursors. The encoded protein may be involved in development of the placenta. Alternate splicing results in multiple transcript variants.

经过测试的应用: Flow Cyt

推荐稀释比: Flow Cyt 1:100

种属反应性: Rabbit

亚型: Rabbit:Human Fc chimeric IgG1

纯化: Purified from cell culture supernatant by affinity chromatography

种属反应性: 人 M-CSF

成分: Lyophilized from sterile PBS, pH 7.4. 5 % – 8% trehalose is added as protectants before lyophilization.

储存和运输: Store at -20°C to -80°C for 12 months in lyophilized form.

After reconstitution, if not intended for use within a month, aliquot and store at -80°C (Avoid repeated freezing and thawing).

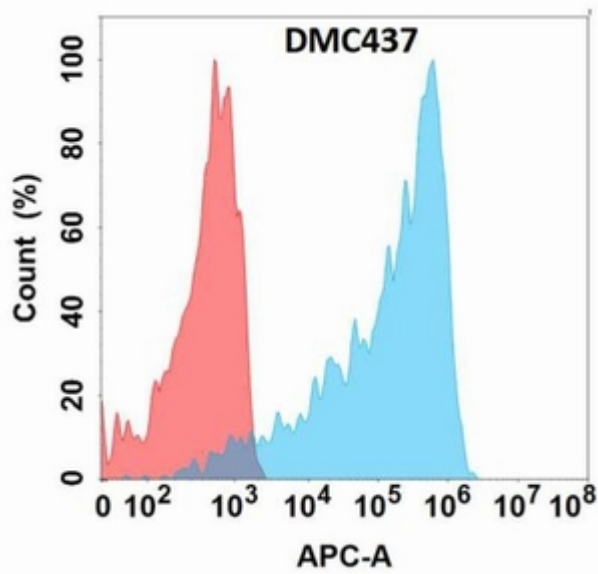


Figure 1. Flow cytometry analysis with Anti-M-CSF (DMC437) on Expi293 cells transfected with human M-CSF (Blue histogram) or Expi293 transfected with irrelevant protein (Red histogram).