

CD56 MAB (LORVOTUZUMAB)

货号: 28102

产品全名: CD56(Lorvotuzumab) 单抗

基因符号 MSK39;NCAM

描述: CD56(lorvotuzumab) 单抗

背景: Research grade biosimilar. Not for use in therapeutic or diagnostic procedures for humans or animals.

经过测试的应用: ELISA; Flow Cyt

推荐稀释比: ELISA 1:5000-10000; Flow Cyt 1:100

种属反应性: Humanized

亚型: IgG1

纯化: Purified from cell culture supernatant by affinity chromatography

种属反应性: 人 CD56

成分: Lyophilized from sterile PBS, pH 7.4. 5 % – 8% trehalose is added as protectants before lyophilization.

储存和运输: Store at -20°C to -80°C for 12 months in lyophilized form. After reconstitution, if not intended for use within a month, aliquot and store at -80°C (Avoid repeated freezing and thawing).

Anti-CD56 (lorvotuzumab biosimilar) mAb ELISA

0.2 µg of Human CD56, His tagged protein per well

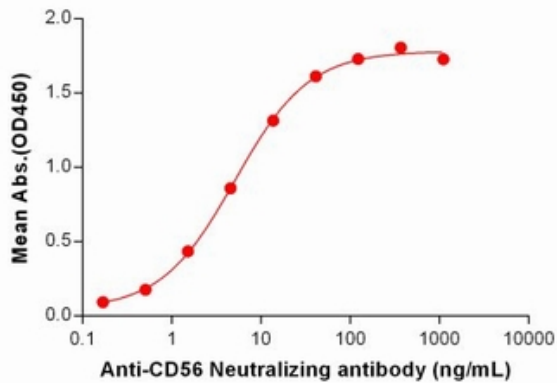


Figure 1. ELISA plate pre-coated by 2 µg/mL (100 µl/well) Human CD56 Protein, His Tag 11242 can bind Anti-CD56 Neutralizing antibody (28102) in a linear range of 0.51-41.15 ng/mL.

Anti-CD56 (lorvotuzumab biosimilar) mAb ELISA

0.2 µg of Human CD56, hFc tagged protein per well

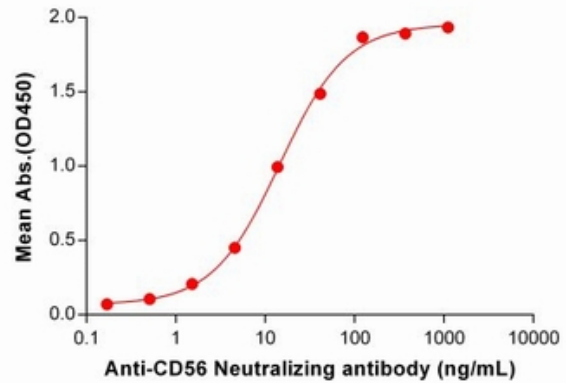


Figure 2. ELISA plate pre-coated by 2 µg/mL (100 µl/well) Human CD56 Protein, hFc Tag (11340) can bind Anti-CD56 Neutralizing antibody (28102) in a linear range of 1.52-123.46 ng/mL. In order to specifically detect 28102, mouse anti-human Fab-specific antibody was used as detection antibody.

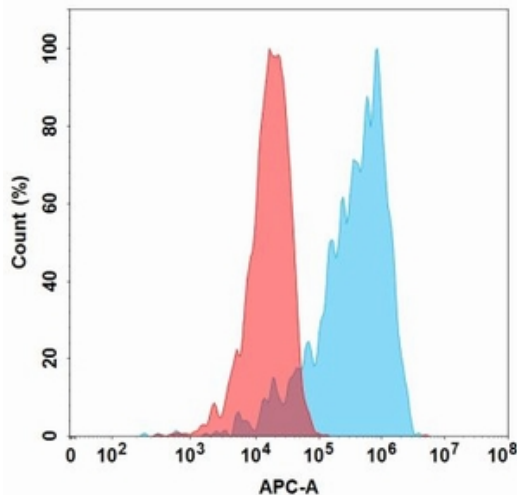


Figure 3. Flow cytometry analysis with 1 µg/mL Anti-CD56 (lorvotuzumab biosimilar) mAb (28102) on Expi293 cells transfected with Human CD56 protein (Blue histogram) or Expi293 transfected with irrelevant protein (Red histogram).