

CLEC4C MAB (LITIFILIMAB)

货号: 28147

产品全名: CLEC4C (Litifilimab) 单抗

基因符号 BDCA-2;CD303

描述: CLEC4C (litifilimab) 单抗

背景: Research grade biosimilar. Not for use in therapeutic or diagnostic procedures for humans or animals.

经过测试的应用: ELISA; Flow Cyt

推荐稀释比: ELISA 1:5000-10000; Flow Cyt 1:100

种属反应性: Humanized

亚型: IgG1(E239D, M241L)

纯化: Purified from cell culture supernatant by affinity chromatography

种属反应性: 人 CLEC4C

成分: Lyophilized from sterile PBS, pH 7.4. 5% - 8% trehalose is added as protectants before lyophilization.

储存和运输: Store at -20°C to -80°C for 12 months in lyophilized form. After reconstitution, if not intended for use within a month, aliquot and store at -80°C (Avoid repeated freezing and thawing).

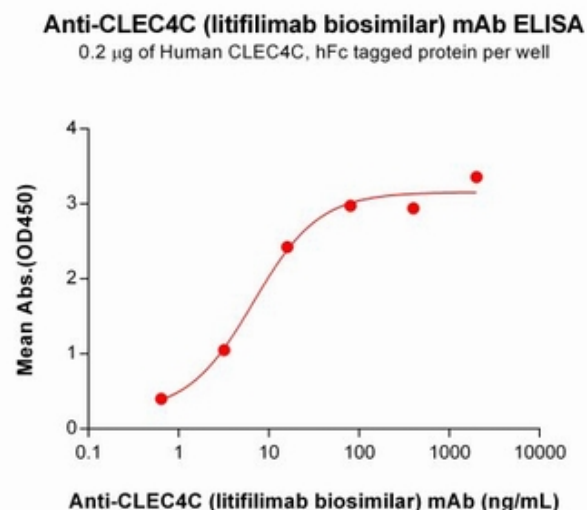


Figure 1. ELISA plate pre-coated by 2 $\mu\text{g}/\text{mL}$ (100 $\mu\text{l}/\text{well}$) Human CLEC4C Protein, hFc Tag (11544) can bind Anti-CLEC4C (litifilimab biosimilar) mAb (28147) in a linear range of 0.64-80.00 ng/mL. In order to specifically detect 28147, mouse anti-human Fab-specific antibody was used as detection antibody.

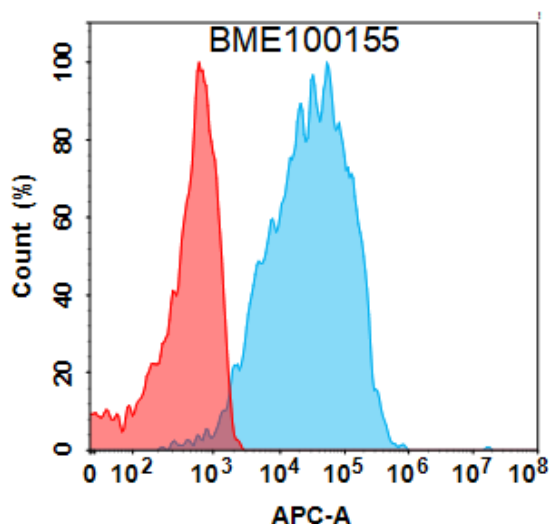


Figure 2. Flow cytometry analysis with 1 $\mu\text{g}/\text{mL}$ Anti-CLEC4C (litifilimab biosimilar) mAb (28147) on Expi293 cells transfected with Human CLEC4C protein (Blue histogram) or Expi293 cells transfected with irrelevant protein (Red histogram).



Product Description

Pioneering GTPase and Oncogene Product Development since 2010
