

## KIR2DL2 MAB (LIRILUMAB)

货号: 28129

产品全名: KIR2DL2(Lirilumab) 单抗

基因符号 CD158b;CD158B1;NKAT-6;NKAT6;p58.2

描述: KIR2DL2(lirilumab) 单抗

背景: Research grade biosimilar. Not for use in therapeutic or diagnostic procedures for humans or animals.

经过测试的应用: Flow Cyt

推荐稀释比: Flow Cyt 1:100

种属反应性: Homo sapiens

亚型: IgG4

纯化: Purified from cell culture supernatant by affinity chromatography

种属反应性: 人 KIR2DL2

成分: Lyophilized from sterile PBS, pH 7.4. 5 % – 8% trehalose is added as protectants before lyophilization.

储存和运输: Store at -20°C to -80°C for 12 months in lyophilized form.

After reconstitution, if not intended for use within a month, aliquot and store at -80°C (Avoid repeated freezing and thawing).

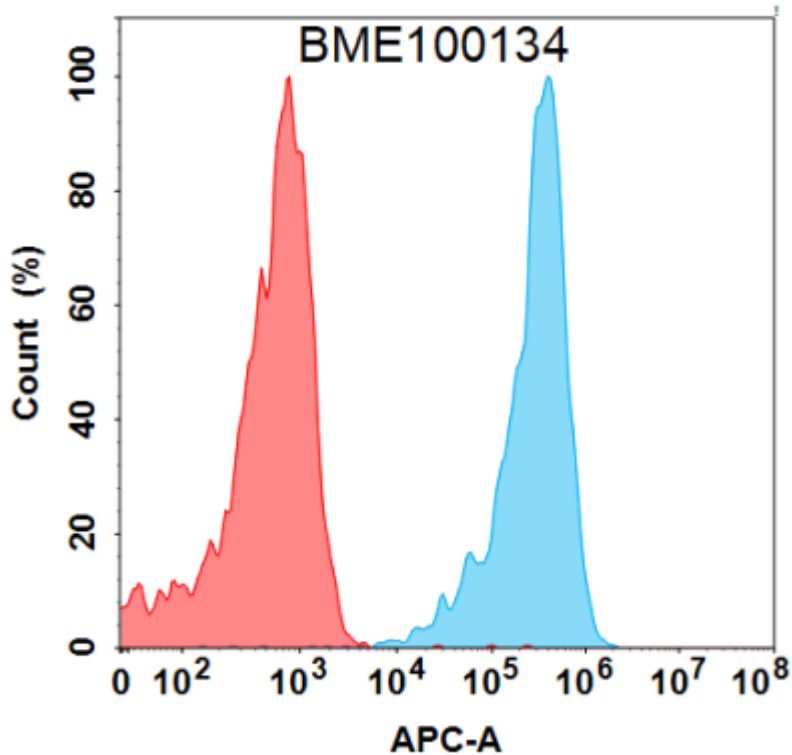


Figure 1. Flow cytometry analysis with 1  $\mu\text{g}/\text{mL}$  Anti-KIR2DL2 (lirilumab biosimilar) mAb (28129) on Expi293 cells transfected with Human KIR2DL2 protein (Blue histogram) or Expi293 transfected with irrelevant protein (Red histogram).