

## LAG3 (DM160) RABBIT MAB

货号: 28504

产品全名: LAG3(DM160) 兔单克隆抗体

基因符号 LAG-3; CD223

描述: LAG3 antibody(DM160) 兔单克隆抗体

背景: Lymphocyte-activation protein 3 belongs to Ig superfamily and contains 4 extracellular Ig-like domains. The LAG3 gene contains 8 exons. The sequence data; exon:intron organization; and chromosomal localization all indicate a close relationship of LAG3 to CD4. [provided by RefSeq; Jul 2008]

经过测试的应用: ELISA; Flow Cyt

推荐稀释比: ELISA 1:5000-10000; Flow Cyt 1:100

种属反应性: Rabbit

亚型: Rabbit IgG

纯化: Purified from cell culture supernatant by affinity chromatography

种属反应性: 人 LAG3

成分: Lyophilized from sterile PBS, pH 7.4. 5 % – 8% trehalose is added as protectants before lyophilization.

储存和运输: Store at  $-20^{\circ}\text{C}$  to  $-80^{\circ}\text{C}$  for 12 months in lyophilized form. After reconstitution, if not intended for use within a month, aliquot and store at  $-80^{\circ}\text{C}$  (Avoid repeated freezing and thawing).

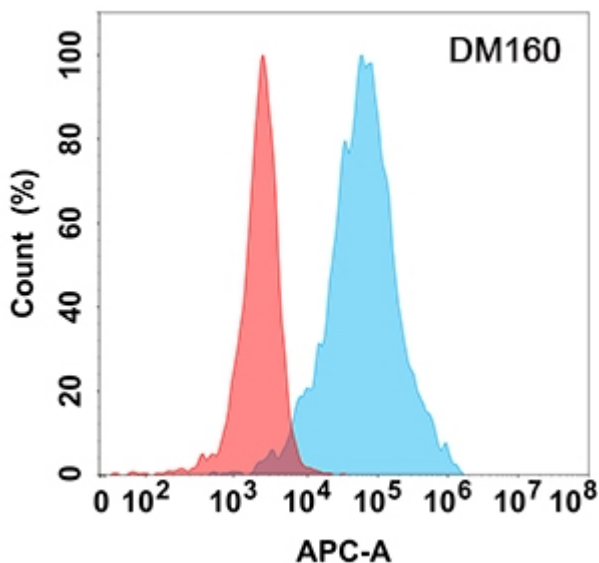


Figure 1. Flow cytometry analysis with Anti-LAG3 (DM160) on Expi293 cells transfected with human LAG3 (Blue histogram) or Expi293 transfected with irrelevant protein (Red histogram)



# Product Description

Pioneering GTPase and Oncogene Product Development since 2010

---