

## M-CSF MAB (LACNOTUZUMAB)

货号: 28104

产品全名: M-CSF(Lacnotuzumab) 单抗

基因符号 CSF-1;MCSF

描述: M-CSF(lacnotuzumab) 单抗

背景: Research grade biosimilar. Not for use in therapeutic or diagnostic procedures for humans or animals.

经过测试的应用: ELISA; Flow Cyt

推荐稀释比: ELISA 1:5000-10000; Flow Cyt 1:100

种属反应性: Humanized

亚型: IgG1

纯化: Purified from cell culture supernatant by affinity chromatography

种属反应性: 人 M-CSF

成分: Lyophilized from sterile PBS, pH 7.4. 5 % - 8% trehalose is added as protectants before lyophilization.

储存和运输: Store at  $-20^{\circ}\text{C}$  to  $-80^{\circ}\text{C}$  for 12 months in lyophilized form. After reconstitution, if not intended for use within a month, aliquot and store at  $-80^{\circ}\text{C}$  (Avoid repeated freezing and thawing).

### Anti-M-CSF (lacnotuzumab biosimilar) mAb ELISA

0.2 µg of Human M-CSF, His tagged protein per well

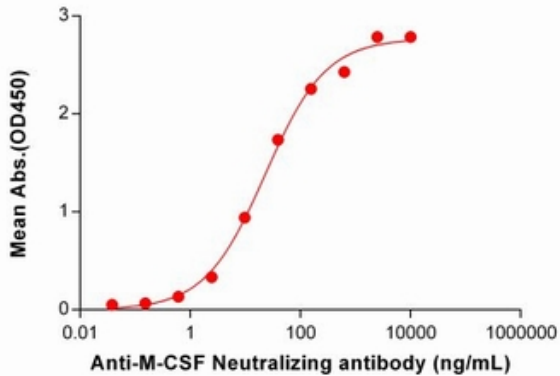


Figure 1. ELISA plate pre-coated by 2 µg/mL (100 µl/well) Human M-CSF Protein, His Tag 11369 can bind Anti-M-CSF Neutralizing antibody ( 28104) in a linear range of 2.44-156.25 ng/mL.

### Anti-M-CSF (lacnotuzumab biosimilar) mAb ELISA

0.2 µg of Human M-CSF, hFc tagged protein per well

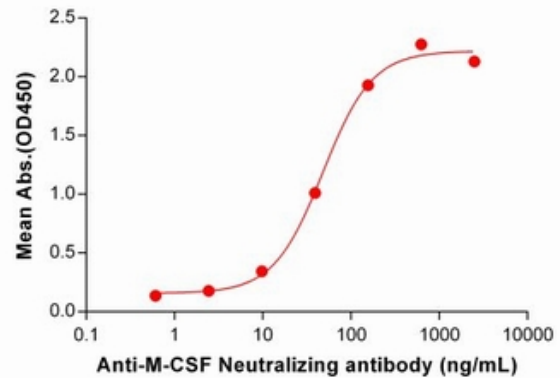


Figure 2. ELISA plate pre-coated by 2 µg/mL (100 µl/well) Human M-CSF Protein, hFc Tag (11350) can bind Anti-M-CSF Neutralizing antibody (28104) in a linear range of 9.77-156.25 ng/mL. In order to specifically detect 28104, mouse anti-human Fab-specific antibody was used as detection antibody.

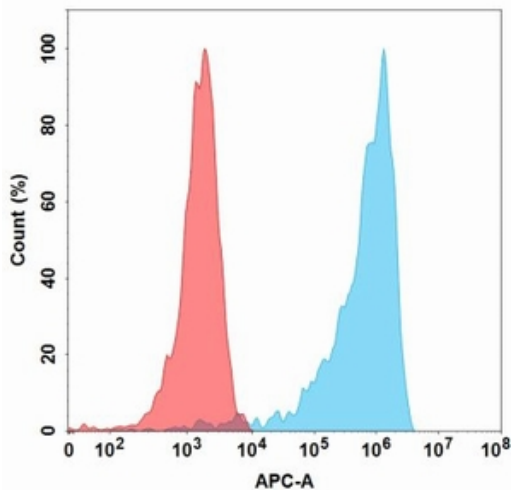


Figure 3. Flow cytometry analysis with 1 µg/mL Anti-M-CSF (lacnotuzumab biosimilar) mAb (28104) on Expi293 cells transfected with Human M-CSF protein (Blue histogram) or Expi293 transfected with irrelevant protein (Red histogram).