

KIT(K642E)

产品名称: KIT(K642E)

货号: 26278

基因符号: C-Kit; CD117; KIT; PBT; SCFR

描述: KIT(K642E) 小鼠单抗

背景: Tyrosine-protein kinase Kit, also known as proto-oncogene c-Kit or CD117 or Mast/stem cell growth factor receptor (SCFR), is a receptor tyrosine kinase protein that in humans is encoded by the KIT gene. Activating mutations in this gene are associated with gastrointestinal stromal tumors, testicular seminoma, mast cell disease, melanoma, acute myeloid leukemia, while inactivating mutations are associated with the genetic defect piebaldism.

免疫原: A synthetic peptide from the internal region of KIT which includes the mutation of K642E, human origin.

经过测试的应用: ELISA, WB

推荐稀释比: ELISA: 1:1000-1:5000WB: 1:500-1:1000

Concentration: 1 mg/ml

种属反应性: Mouse

形式: Liquid

克隆性: Monoclonal

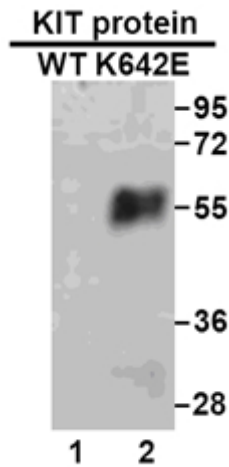
亚型: IgG

纯化: Purified from ascites

成分: PBS (without Mg²⁺ and Ca²⁺), pH 7.4, 150 mM NaCl, 50% glycerol

种属反应性: Recognizes K642E mutant, but not wild type KIT of vertebrates.

储存条件: Store at -20°C. Avoid repeated freezing and thawing



蛋白质印迹: WB: Anti- KIT (K642E) mAb **Western blot analysis of recombinant KIT(K642E) and wild type proteins.** Purified His-tagged KIT(K642E) protein (lane 2) and corresponding wild type protein (lane 1) were blotted with Anti-KIT(K642E) monoclonal antibody (货号:26278).