

## KIT(D820E)

### KIT(D820E)

货号: 26274

基因符号: C-Kit; CD117; KIT; PBT; SCFR

描述: KIT(D820E) 小鼠单克隆抗体

背景: Tyrosine-protein kinase Kit, also known as proto-oncogene c-Kit or CD117 or Mast/stem cell growth factor receptor (SCFR), is a receptor tyrosine kinase protein that in humans is encoded by the KIT gene. Activating mutations in this gene are associated with gastrointestinal stromal tumors, testicular seminoma, mast cell disease, melanoma, acute myeloid leukemia, while inactivating mutations are associated with the genetic defect piebaldism.

免疫原: A synthetic peptide from the internal region of KIT which includes the mutation of D820E, human origin.

经过测试的应用: ELISA, WB, IHC

推荐稀释度:

ELISA: 1:1000-1:5000

WB: 1:500-1:1000

IHC: 1:50-1:100

浓度: 1 mg/ml

种属反应性: Mouse

形式: Liquid

克隆性: Monoclonal

亚型: IgG

纯化: Purified from ascites

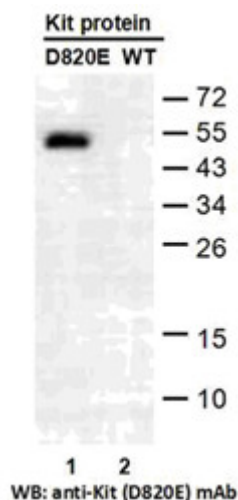
**Preservative:** No

成分: PBS (without Mg<sup>2+</sup> and Ca<sup>2+</sup>), pH 7.4, 150 mM NaCl, 50% glycerol

种属反应性: Recognizes D820E mutant, but not wild type KIT of vertebrates.

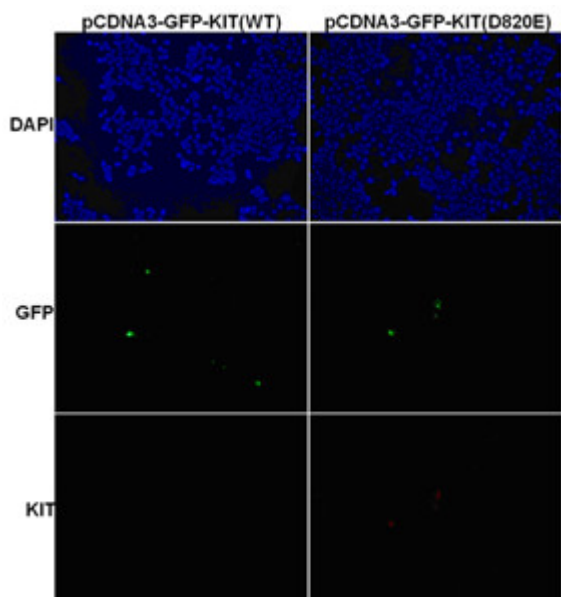
储存条件: Store at -20°C. Avoid repeated freezing and thawing

## Western blot:



**Western blot analysis of recombinant KIT (D820E) and wild type proteins.** Purified His-tagged KIT (D820E) protein (lane 1) and corresponding wild type protein (lane 2) were blotted with KIT(D820E) monoclonal antibody (货号26274).

## Immunofluorescence:



**Immunofluorescence of cells expressing KIT proteins with KIT(D820E) antibody.**

HEK293T cells were transfected with pCDNA3-GFP-KIT (WT) plasmid (left column) or pCDNA3-GFP-KIT (D820E) plasmid (right column), then fixed and stained with KIT (D820E) monoclonal antibody (货号26274).