

HUMAN TREM2 PROTEIN, HFC TAG

货号: 11429

产品全名: 人 TREM2 蛋白

规格: 10/50/100 μ g

基因符号 PLOSL2;TREM-2;Trem2a;Trem2b;Trem2c

目标蛋白: TREM2

UNIPROT ID: Q9NZC2

描述: Recombinant Human TREM2 with C-terminal human Fc tag

背景: This gene encodes a membrane protein that forms a receptor signaling complex with the TYRO protein tyrosine kinase binding protein. The encoded protein functions in immune response and may be involved in chronic inflammation by triggering the production of constitutive inflammatory cytokines. Defects in this gene are a cause of polycystic lipomembranous osteodysplasia with sclerosing leucoencephalopathy (PLOSL). Alternative splicing results in multiple transcript variants encoding different isoforms. [provided by RefSeq, Nov 2012]

物种/宿主: HEK293

分子量: The protein has a predicted molecular mass of 43.6 kDa after removal of the signal peptide. The apparent molecular mass of TREM2-hFc is approximately 35-55 kDa due to glycosylation.

分子特征: TREM2(His19-Ser174) hFc(Glu99-Ala330)

纯化: The purity of the protein is greater than 95% as determined by SDS-PAGE and Coomassie blue staining.

Formulation & Reconstitution: Lyophilized from nanodisc solubilization buffer (20 mM Tris-HCl, 150 mM NaCl, pH 8.0). Normally 5% - 8% trehalose is added as protectants before lyophilization.

储存和运输: Store at -20°C to -80°C for 12 months in lyophilized form. After reconstitution, if not intended for use within a month, aliquot and store at -80°C (Avoid repeated freezing and thawing). Lyophilized proteins are shipped at ambient temperature.

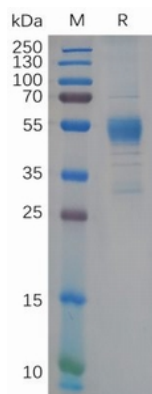


Figure 1. Human TREM2 Protein, hFc Tag on SDS-PAGE under reducing condition.

Human TREM2,hFc Tagged protein ELISA

0.2 μ g of Human TREM2, hFc tagged protein per well

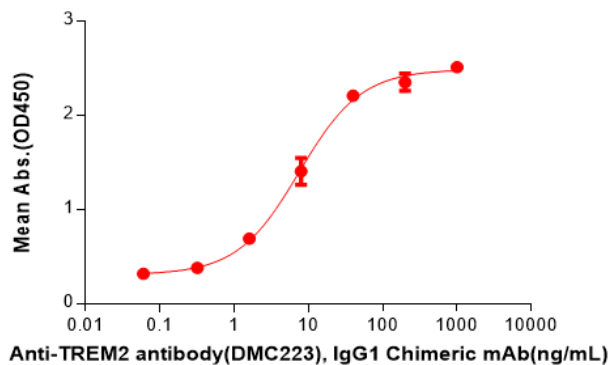


Figure 2. ELISA plate pre-coated by 2 μ g/ml (100 μ l/well) Human TREM2 Protein, hFc Tag(11429) can bind Anti-TREM2 antibody(DMC223), IgG1 Chimeric mAb in a linear range of 1.60-40 ng/mL.